

Horizontal Multistage Centrifugal Pumps

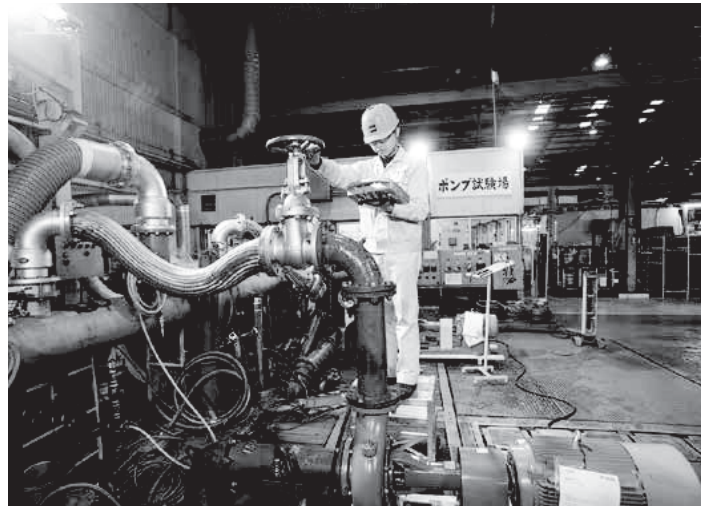
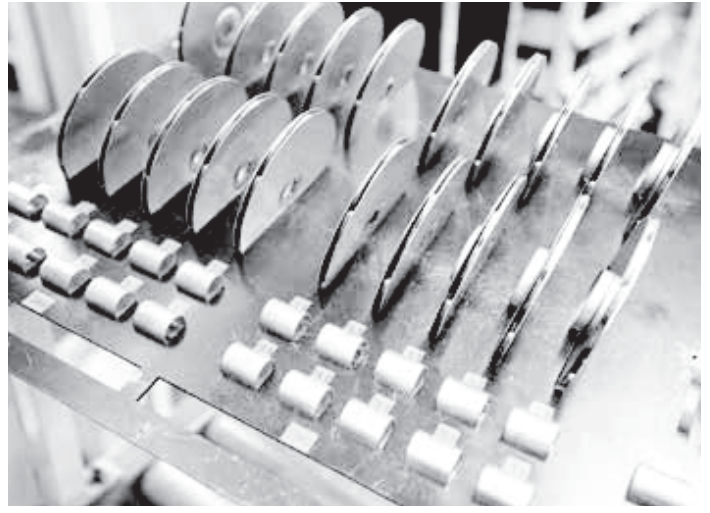
AB Cast iron
&
Stainless steel

AHI Stainless steel
AISI 304

ABI Stainless steel
AISI 304

AHN Stainless steel
AISI 316

50Hz/60Hz



Japan since 1918

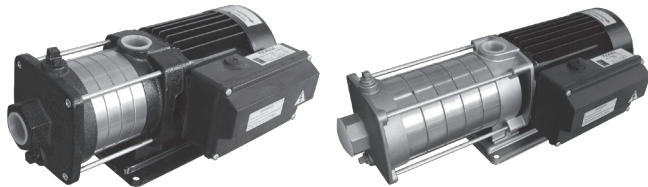
Contents

General Data	2
Sectional View	3
50Hz Performance range	4
AB(l)25x25	5
AB(l)32x25	6
AB40x32	7
AB40x40	8
AHI, AHN25x25	9
AHI, AHN32x32	10
AHI, AHN40x40	11
AHI, AHN40x40B	12
60Hz Performance range	13
AB(l)25x25	14
AB(l)32x25	15
AB40x32	16
AB40x40	17
AHI, AHN25x25	18
AHI, AHN32x32	19
AHI, AHN40x40	20
AHI, AHN40x40B	21
Electrical data	22

Applications

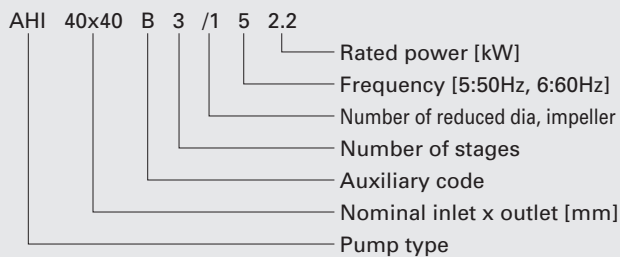
AB, ABI

- Household
- Liquid transfer and circulation
- Pressure boosting
- Air-conditioning and cooling systems



Identification Code

AHI 40x40B3 /1 5 2.2



AHI, AHN

- Household
- Water supply
- Pressure boosting
- Air-conditioning
- Heating and cooling systems
- Water treatment



Pump

AB	The discharge and suction chamber are made of cast iron. The other parts in contact with liquid are made of stainless steel.
ABI	All parts in contact with liquid are made of stainless steel. EPDM or Viton O-rings are available as standard.
AHI	AHI : SS304
AHN	AHI : SS304 AHN : SS316

Motor

	50Hz	60Hz
Rated speed	2850min ⁻¹	3450min ⁻¹
Enclosure class	IP54 (TEFC)	IP54 (TEFC)
Insulation class	F	F
Standard Voltage	1φ-220-240V(0.37-2.2kW)	1φ-110/220V(0.37-0.75kW)
	3φ-220-240V/380-415V(0.37-3.0kW)	1φ-220-240V(0.37-2.2kW) 3φ-220-255V/380-440V(0.37-1.1kW) 3φ-220-277V/380-480V(1.5-3.0kW)

Operating conditions

●AB-ABI

Liquid: Clean liquid without solid particles.
 Liquid temperature range: 0°C~+90°C.
 Maximum ambient temperature: +50°C.
 The maximum operating pressure depends on the temperature of the pumped liquid, see table:

Max. operating pressure	10kg/cm ²	6kg/cm ²
AB(I)25x25, 32x25	0°C to + 40°C	+41°C to + 90°C
AB40x32, 40x40	0°C to + 55°C	+56°C to + 90°C

Min. inlet pressure: According to the NPSH curve + a safety margin of 0.5m.
 Max. inlet pressure: Limited by the max. operating pressure.

●AHI-AHN

Liquid temperature range: 0°C~+110°C.
 Maximum ambient temperature: +40°C.
 Maximum operating pressure: 10kg/cm².
 Maximum inlet pressure is limited by maximum operating pressure.

Pipe connections:

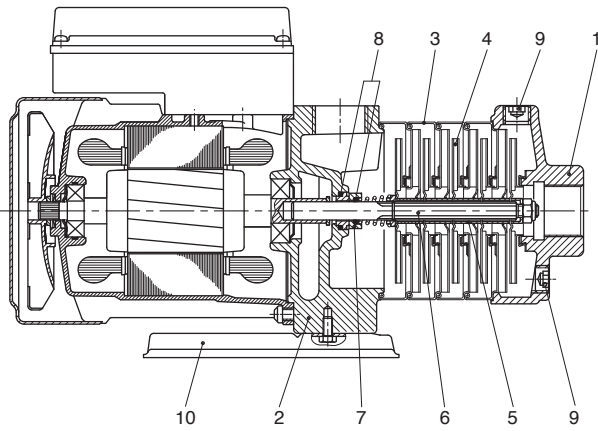
Connections	AB(I)25x25	AB(I)32x25	AB40x32	AB40x40
Suction port	Rp 1	Rp 1 1/4	Rp 1 1/2	Rp 1 1/2
Discharge port	Rp 1	Rp 1	Rp 1 1/4	Rp 1 1/2
Drain hole, priming hole	Rc 3/8	Rc 3/8	Rp 1/2	Rp 1/2

Connection/Pump	AHI/AHN25x25	AHI/AHN32x25	AHI/AHN40x40	AHI/AHN40x40B
Suction port	Rp 1	Rp 1 1/4	Rp 1 1/2	Rp 1 1/2
Discharge port	Rp 1	Rp 1 1/4	Rp 1 1/2	Rp 1 1/2
Drain hole, priming hole	G 3/8	G 3/8	G 3/8	G 3/8

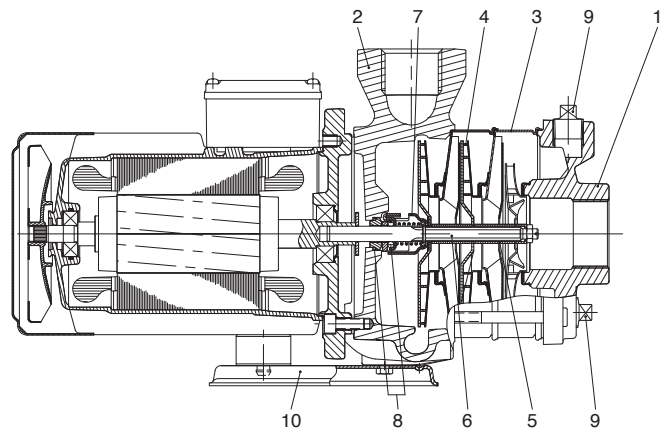
AB, ABI

Sectional view and Materials

AB(I)25x25, 32x25



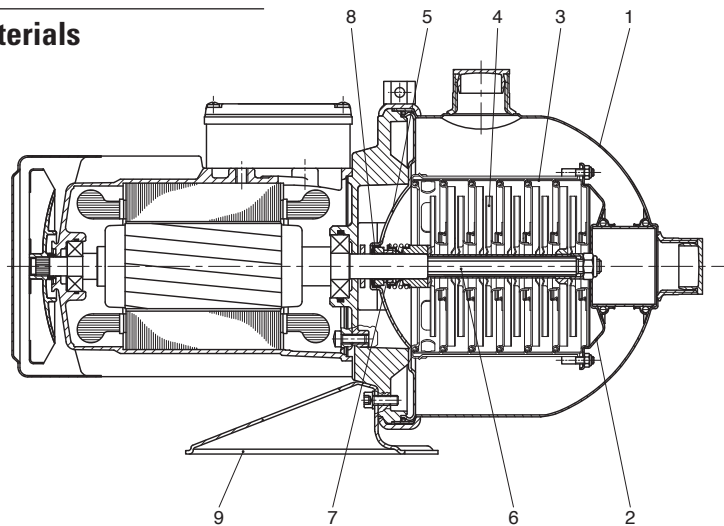
AB40x32, 40x40



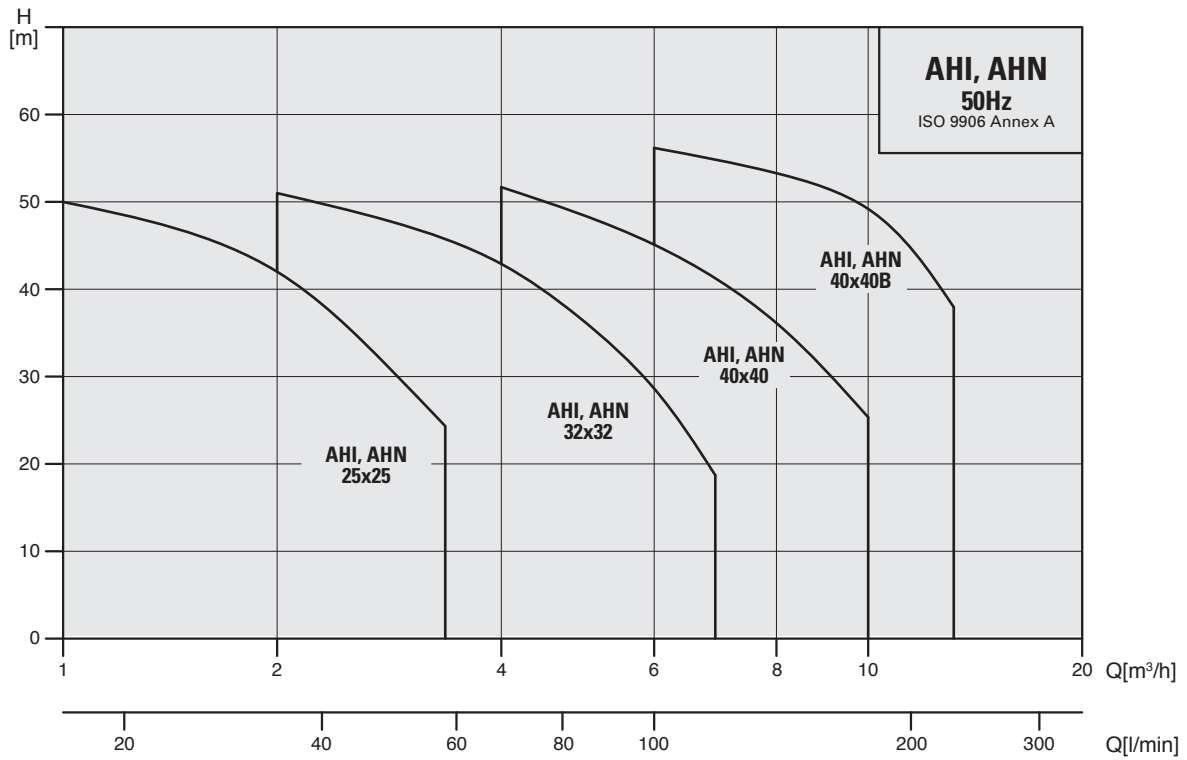
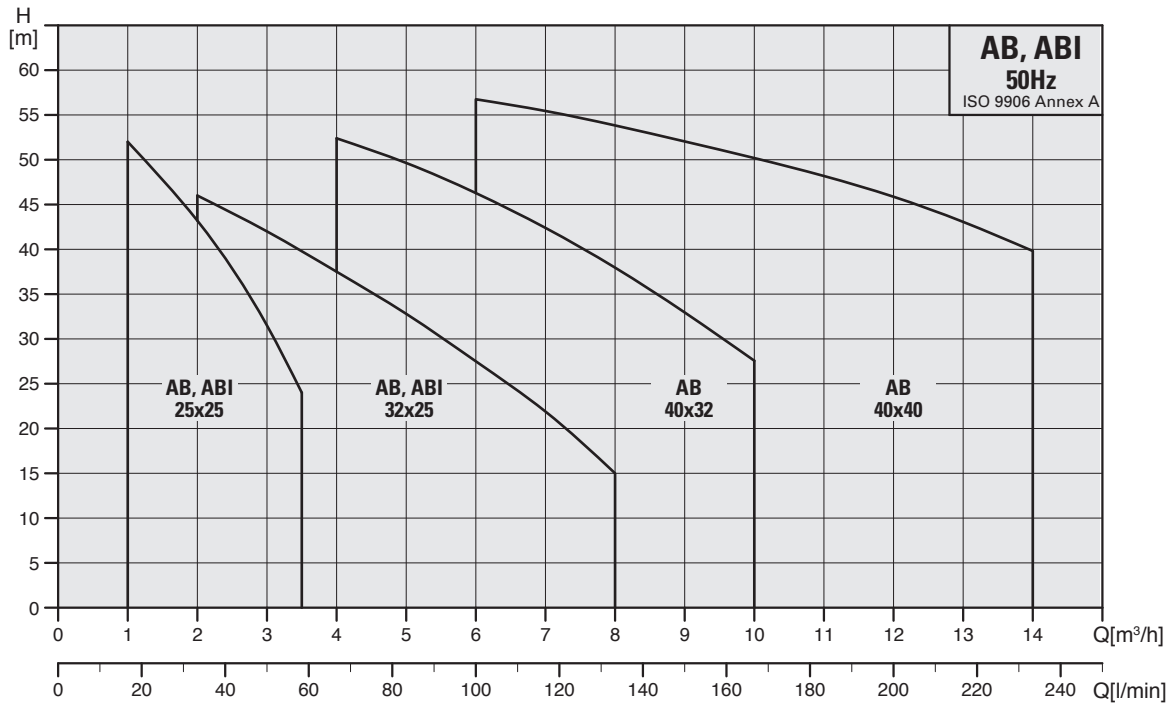
Pos.	Description	Materials	
		AB	ABI
1	Suction chamber	Cast iron	SS304
2	Pump head	Cast iron	SS304
3	Intermediate chamber	SS304	SS304
4	Impeller	SS304	SS304
5	Spacing pipe	SS304	SS304
6	Shaft	SS431	SS431
7	Mechanical seal	Silicon carbide / Carbon	Silicon carbide / Carbon
8	O-ring	EPDM or Viton	EPDM or Viton
9	Drain and priming plug	Steel	SS304
10	Base plate	Steel	SS304

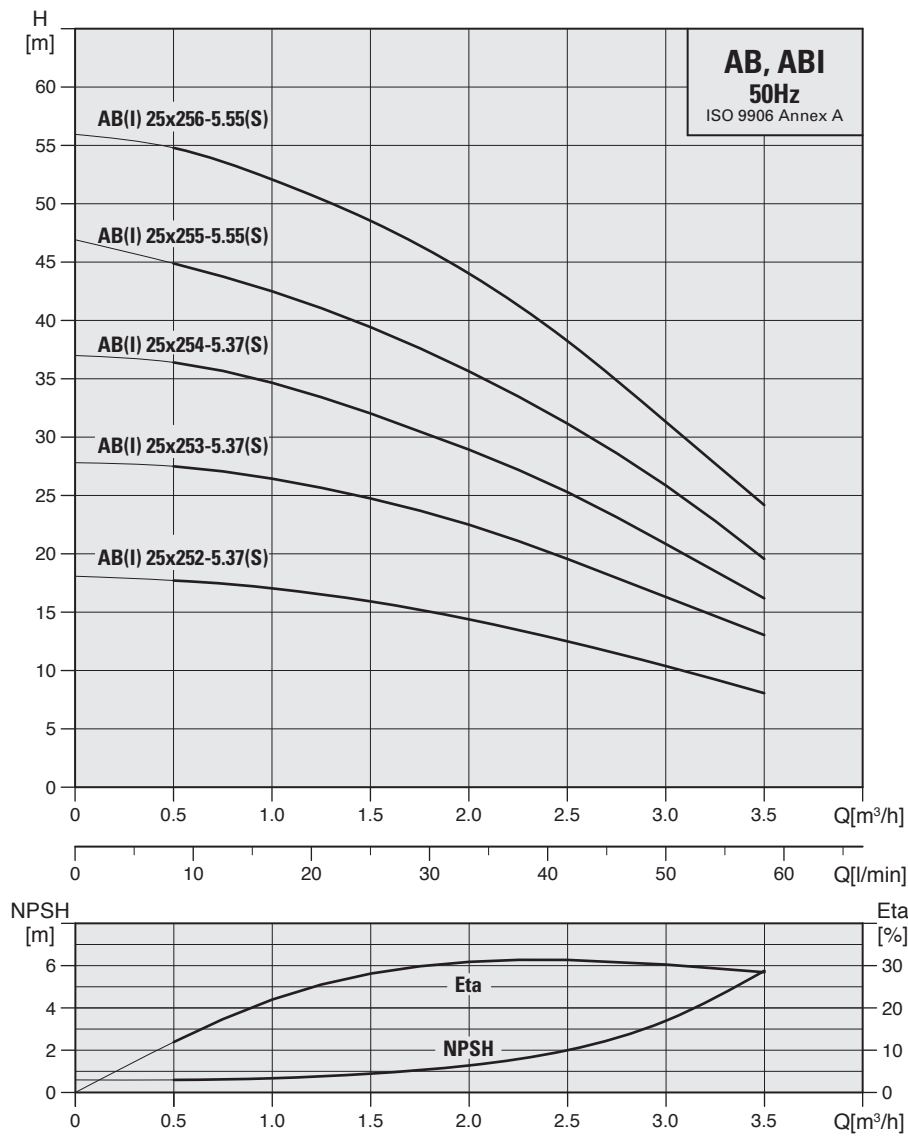
AHI, AHN

Sectional view and Materials

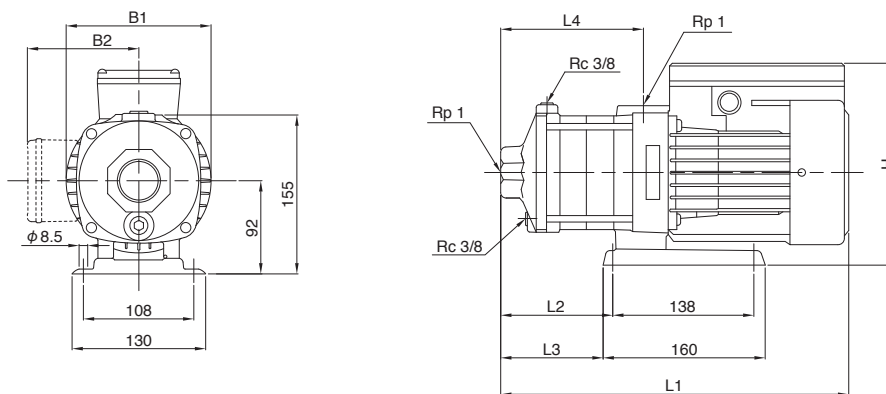


Pos.	Description	Materials	
		AHI	AHN
1	Pump casing	SS304	SS316
2	Suction inter-connector	SS304	SS316
3	Chamber	SS304	SS316
4	Impeller	SS304	SS316
5	Cover plate	SS304	SS316
6	Shaft	SS431	SS316
7	Mechanical seal	Silicon carbide / Carbon	Silicon carbide / Silicon carbide
8	O-ring	EPDM or Viton	EPDM or Viton
9	Base plate	Steel	Steel

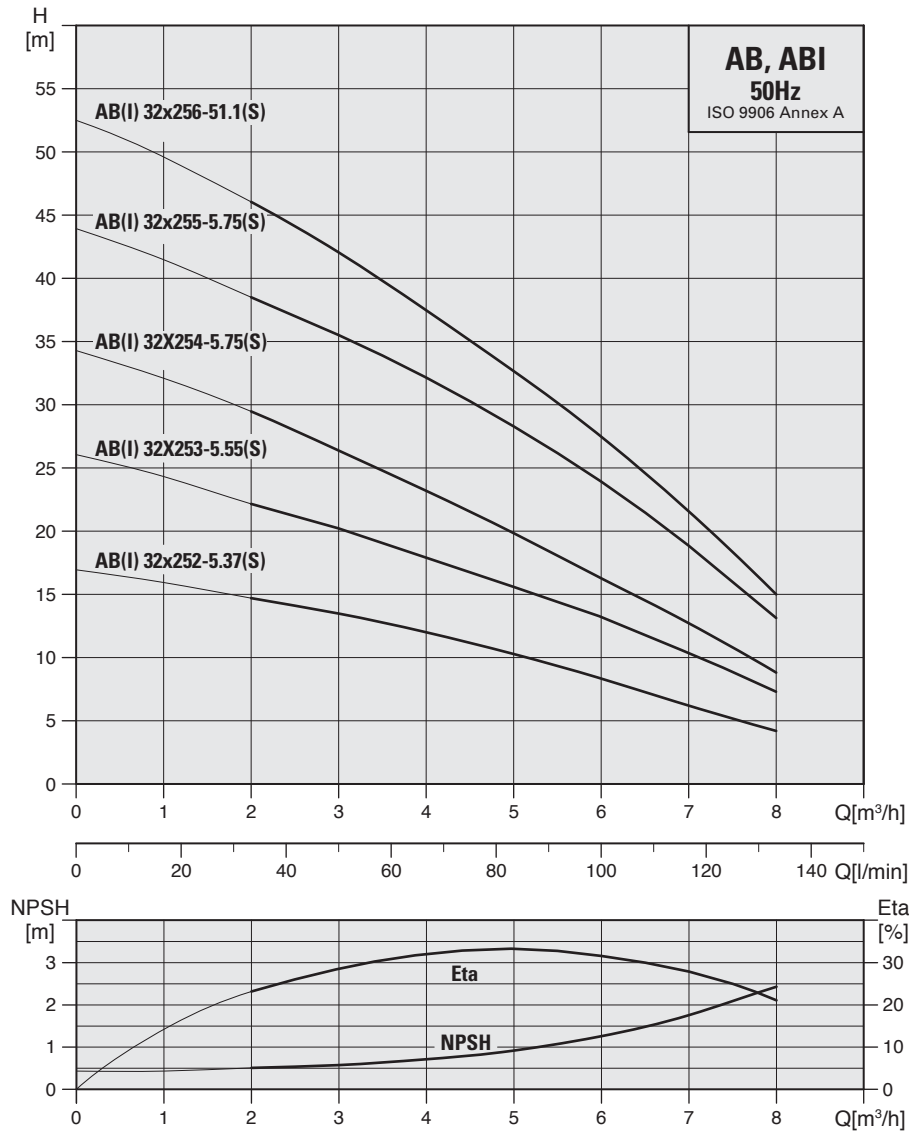




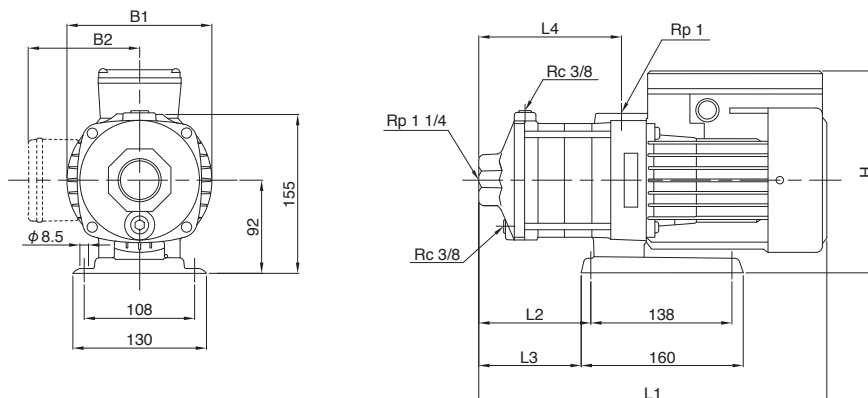
■ Dimensions and weights



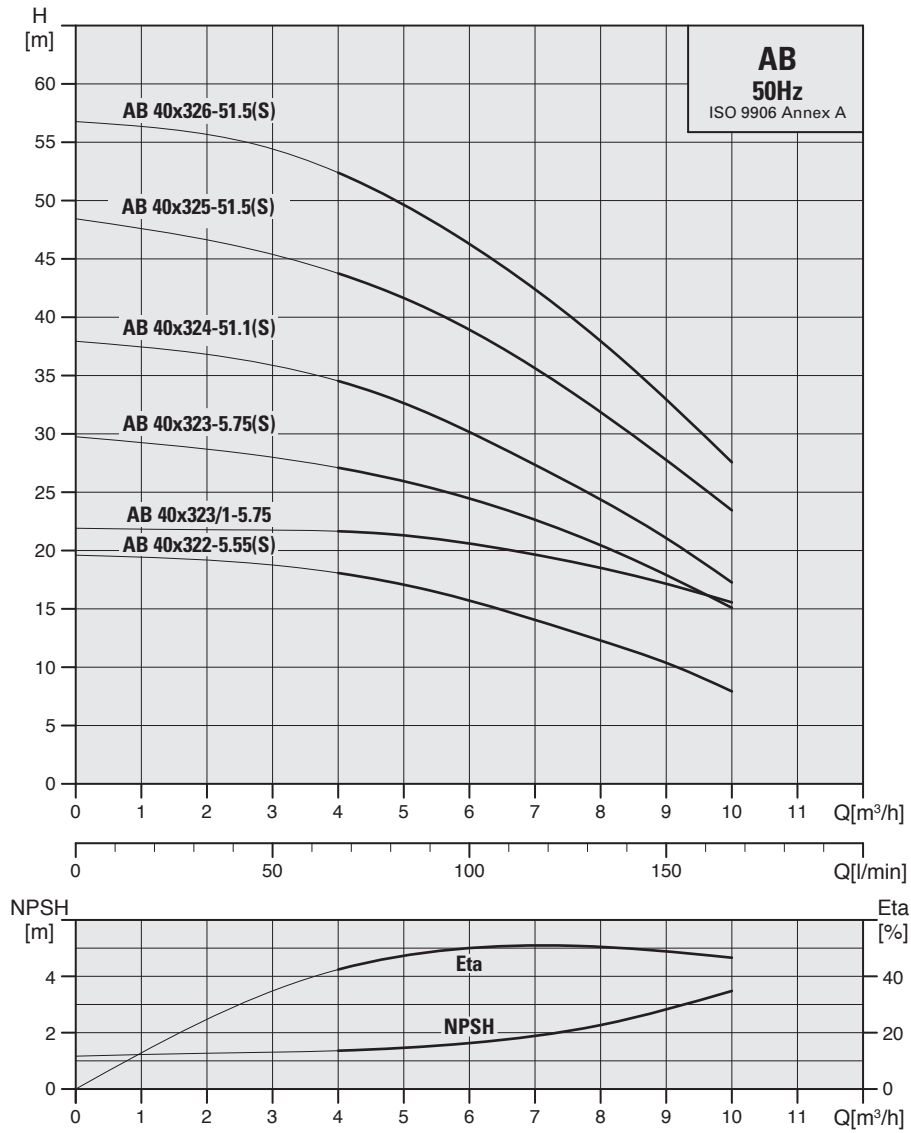
Model	Dimensions (mm)								Weight (kg)				
	L1	L2	L3	L4	B1	B2		H		AB		ABI	
						1φ	3φ	1φ	3φ	1φ	3φ	1φ	3φ
AB, ABI 25x252-5.37(S)	309	75	63	101	141	127	112	228	206	10.3	10.0	9.1	8.8
AB, ABI 25x253-5.37(S)	327	93	81	119	141	127	112	228	206	10.5	10.3	9.4	9.1
AB, ABI 25x254-5.37(S)	345	111	99	137	141	127	112	228	206	10.8	10.5	9.6	9.4
AB, ABI 25x255-5.55(S)	363	129	117	155	141	127	112	228	206	11.6	11.2	10.4	10.1
AB, ABI 25x256-5.55(S)	381	147	135	173	141	127	112	228	206	11.8	11.5	10.7	10.3



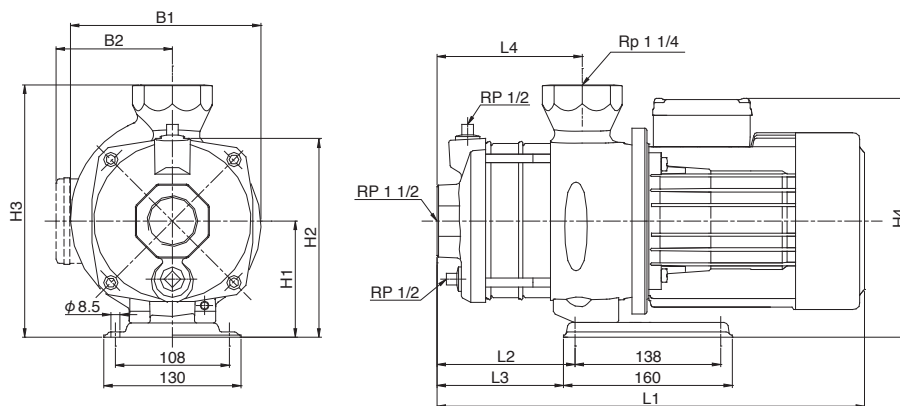
■ Dimensions and weights



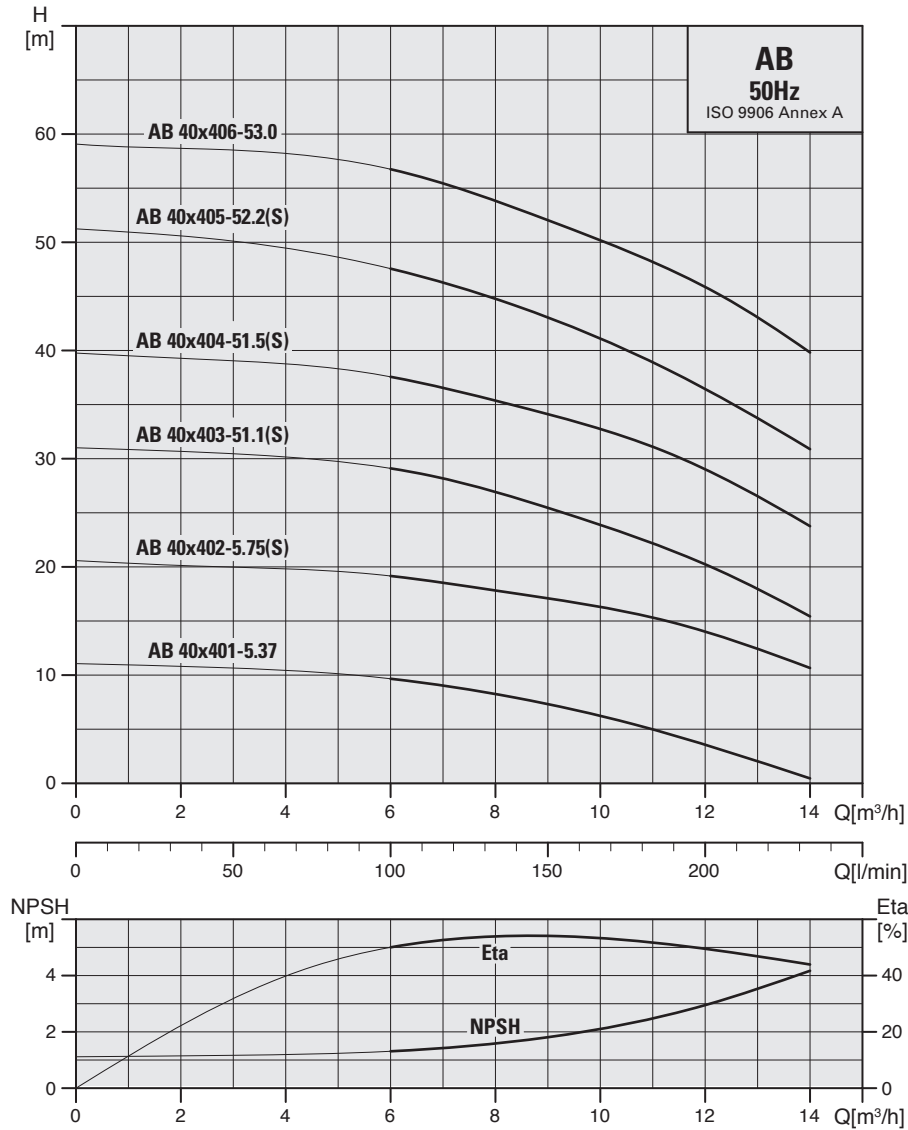
Model	Dimensions (mm)								Weight (kg)				
	L1	L2	L3	L4	B1	B2		H		AB		ABI	
						1φ	3φ	1φ	3φ	1φ	3φ	1φ	3φ
AB, ABI 32x252-5.37(S)	318	84	72	110	141	127	112	228	206	10.4	10.1	9.2	9.0
AB, ABI 32x253-5.55(S)	344	111	99	137	141	127	112	228	206	10.8	10.5	9.6	9.3
AB, ABI 32x254-5.75(S)	372	138	126	164	141	127	112	228	206	11.6	11.2	10.4	10.1
AB, ABI 32x255-5.75(S)	438	165	153	191	141	127	112	228	206	13.4	13.1	11.3	12.0
AB, ABI 32x256-51.1(S)	465	192	180	218	141	127	112	228	206	14.8	14.5	13.6	13.4



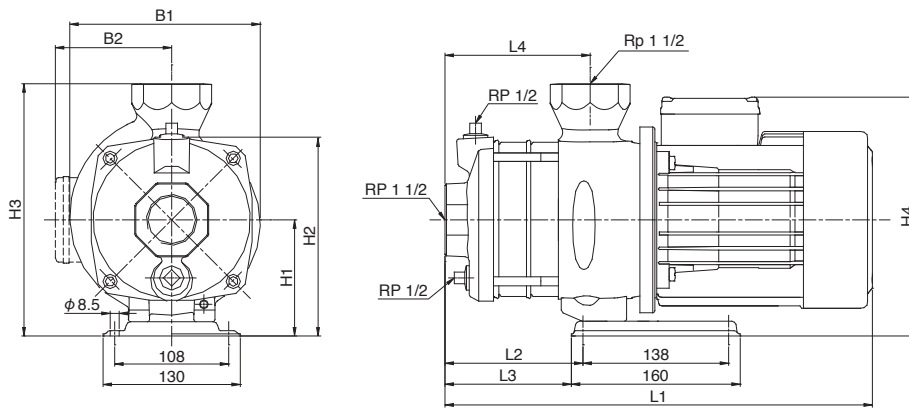
■ Dimensions and weights



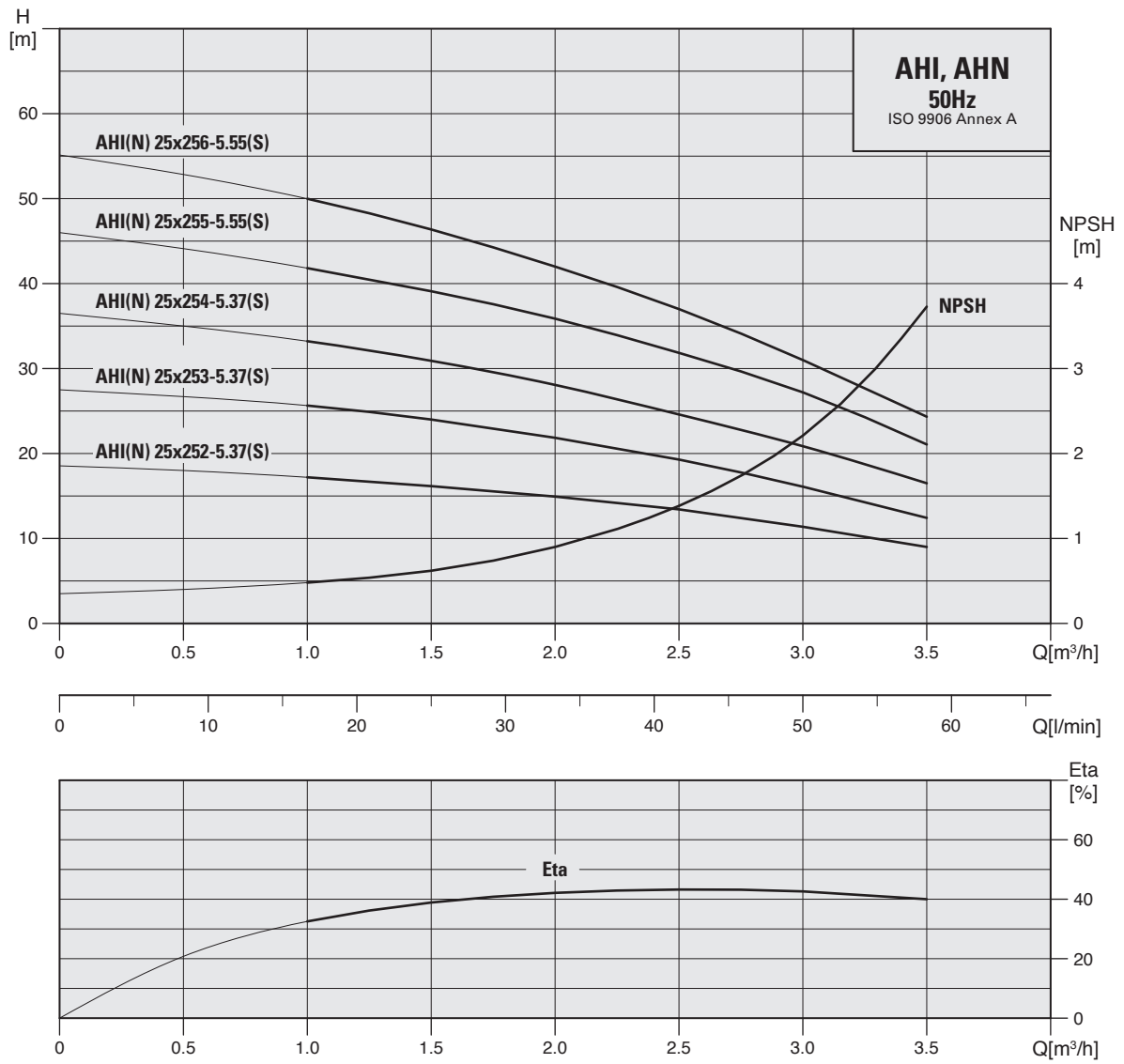
Model	Dimensions (mm)														Weight (kg)	
	L1		L2	L3	L4	B1		B2		H1	H2	H3	H4		1φ	3φ
	1φ	3φ				1φ	3φ	1φ	3φ				1φ	3φ		
AB 40x322-5.55(S)	320	320	54	42	78	181	181	136	116	112	190	240	248	228	17.2	17
AB 40x323/1-5.75	-	390	84	72	108	-	181	-	116	112	190	240	-	228	-	19.1
AB 40x323-5.75(S)	390	390	84	72	108	181	181	136	116	112	190	240	248	228	19.5	19.2
AB 40x324-51.1(S)	390	390	84	72	108	181	181	136	116	112	190	240	248	228	20.7	20.5
AB 40x325-51.5(S)	478	420	132	120	138	185	181	156	116	112	190	240	268	228	27.9	21.4
AB 40x326-51.5(S)	478	478	132	120	138	185	185	156	141	112	190	240	268	253	28.1	27



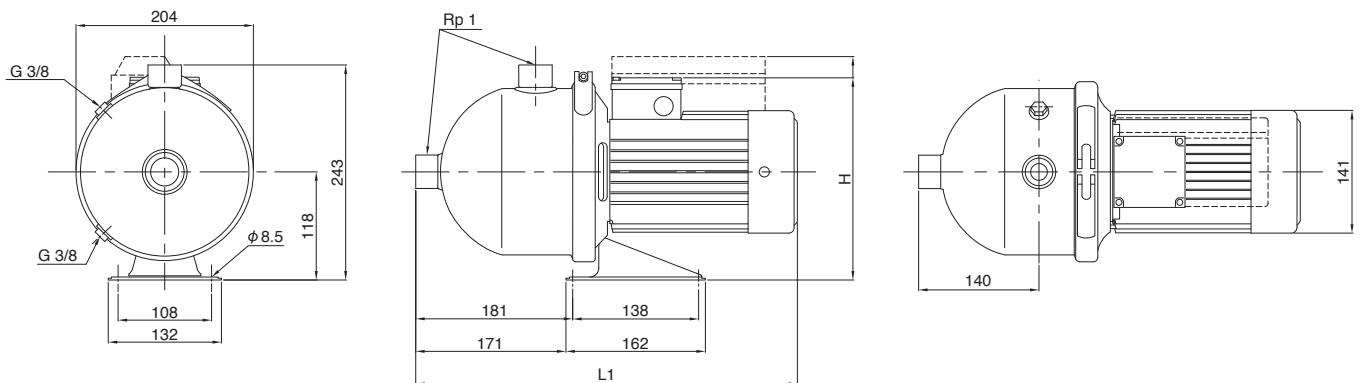
■ Dimensions and weights



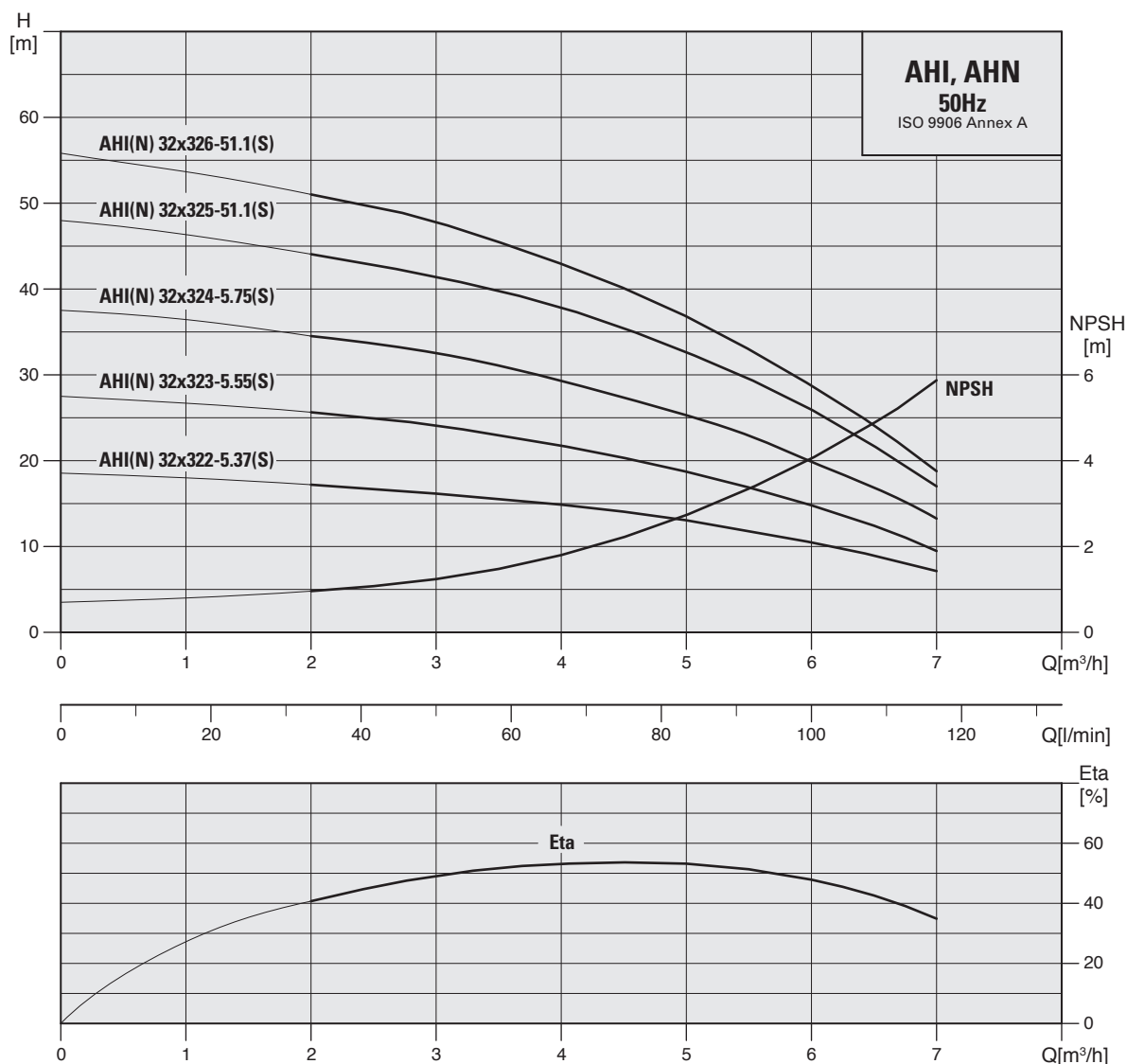
Model	Dimensions (mm)														Weight (kg)	
	L1		L2	L3	L4	B1		B2		H1	H2	H3	H4		1φ	3φ
	1φ	3φ				1φ	3φ	1φ	3φ				1φ	3φ		
AB 40x401-5.37	-	320	54	42	78	-	181	-	116	112	190	240	-	228	-	17.9
AB 40x402-5.75(S)	360	360	54	42	78	181	181	136	116	112	190	240	248	228	18.4	18.2
AB 40x403-51.1(S)	390	390	84	72	108	181	181	136	116	112	190	240	248	228	20.6	20.4
AB 40x404-51.5(S)	448	448	102	90	108	181	185	156	141	112	190	240	268	253	27.1	26.1
AB 40x405-52.2(S)	478	450	132	120	138	185	185	156	141	112	190	240	268	253	29.2	29.3
AB 40x406-53.0	-	503	132	120	138	185	196	-	147	125	203	253	-	272	-	34.6



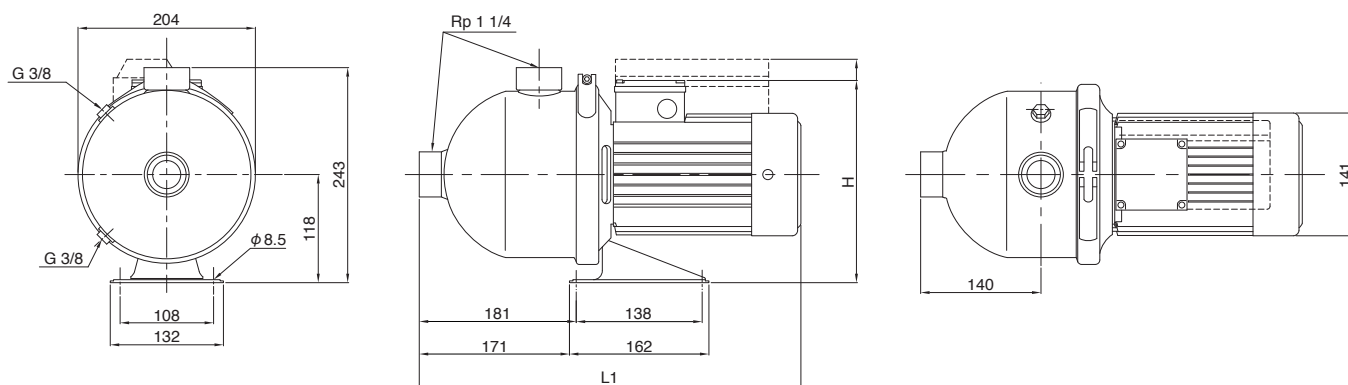
■ Dimensions and weights



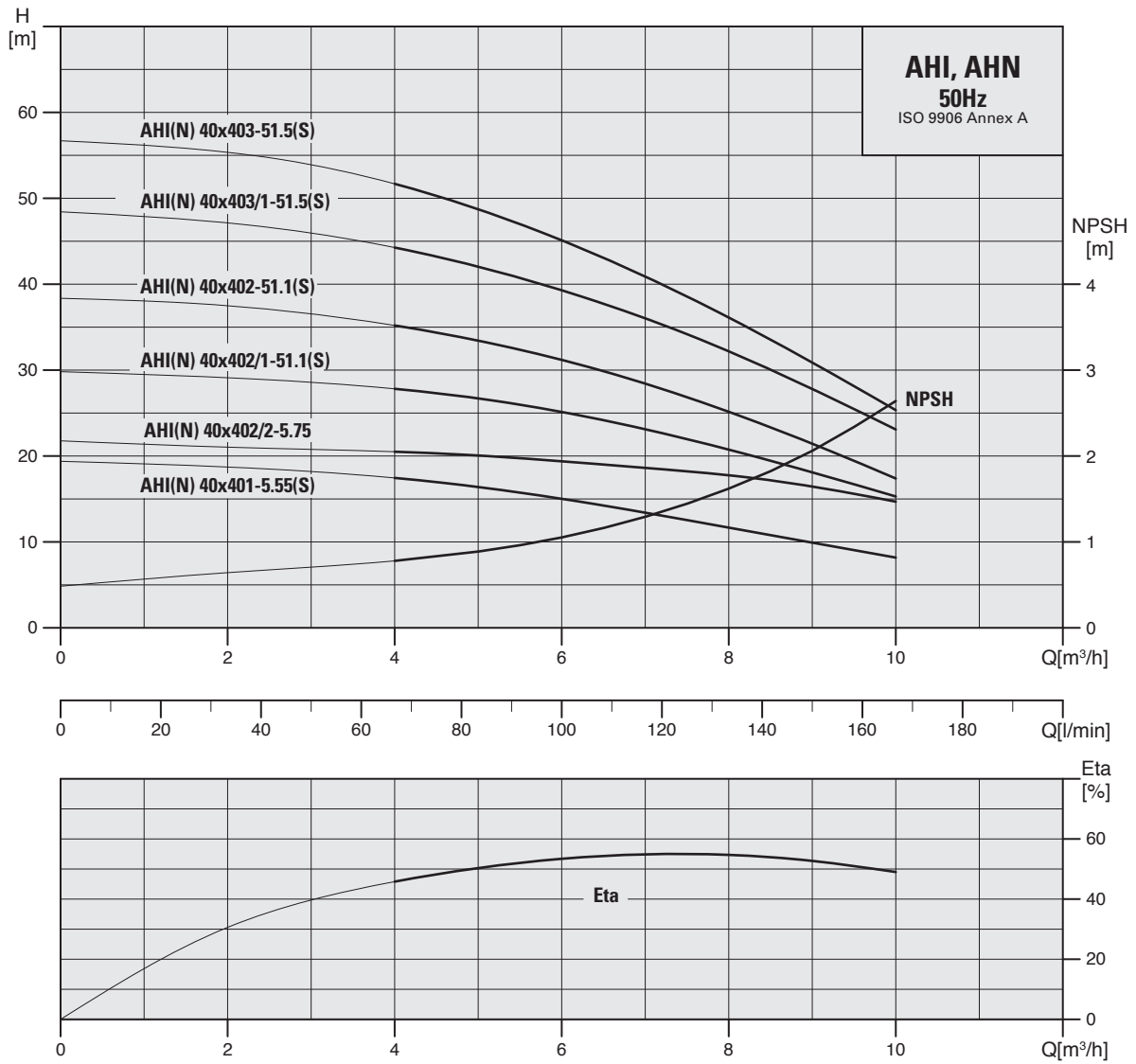
Model	Dimensions (mm)				Weight (kg)
	L1		H		
	1φ	3φ	1φ	3φ	
AHI, AHN 25x252-5.37(S)	403	403	255	233	9.6
AHI, AHN 25x253-5.37(S)	403	403	255	233	9.9
AHI, AHN 25x254-5.37(S)	403	403	255	233	10.1
AHI, AHN 25x255-5.55(S)	403	403	255	233	10.8
AHI, AHN 25x256-5.55(S)	403	403	255	233	11.0



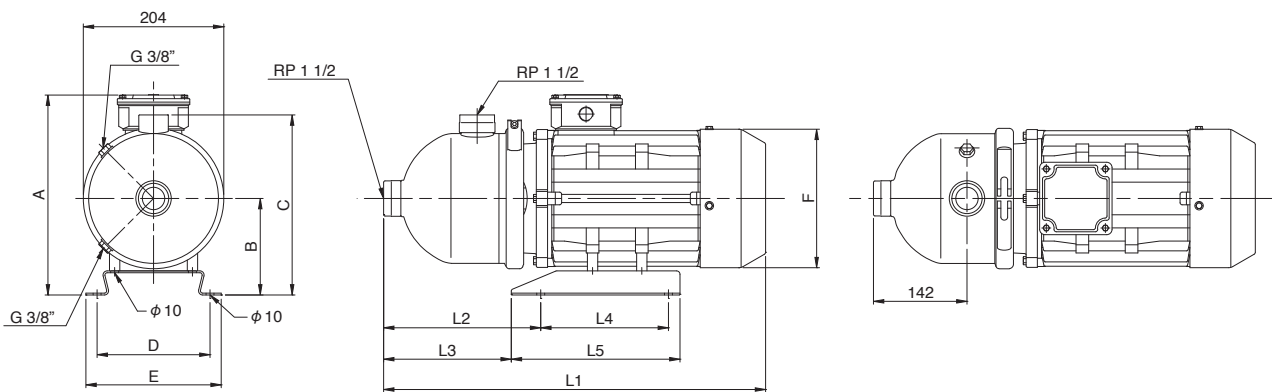
■ Dimensions and weights



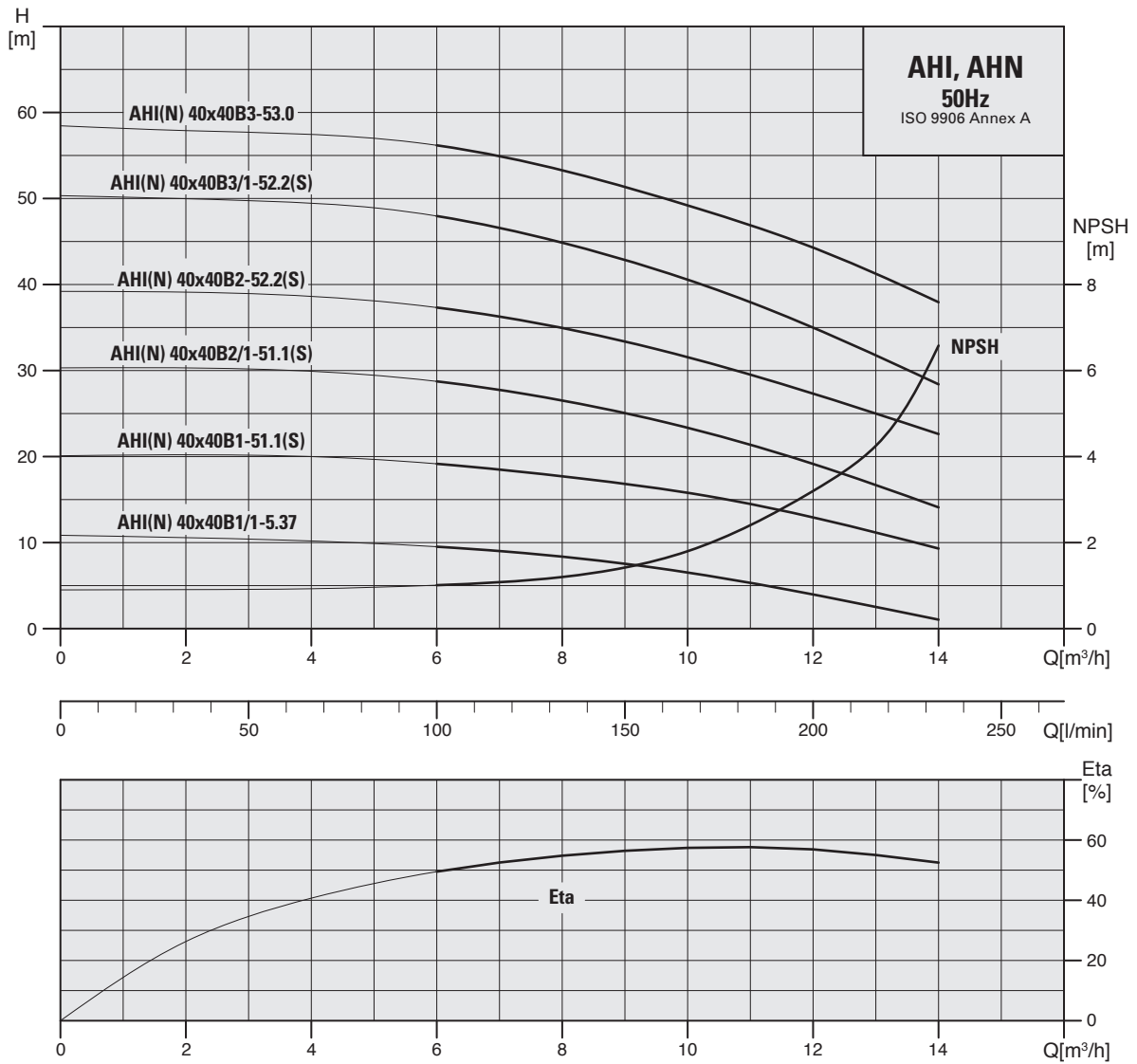
Model	Dimensions (mm)				Weight (kg)
	L1		H		
	1φ	3φ	1φ	3φ	
AHI, AHN 32x322-5.37(S)	403	403	255	233	9.6
AHI, AHN 32x323-5.55(S)	403	403	255	233	9.9
AHI, AHN 32x324-5.75(S)	403	403	255	233	10.6
AHI, AHN 32x325-51.1(S)	441	441	255	233	12.1
AHI, AHN 32x326-51.1(S)	441	441	255	233	12.3



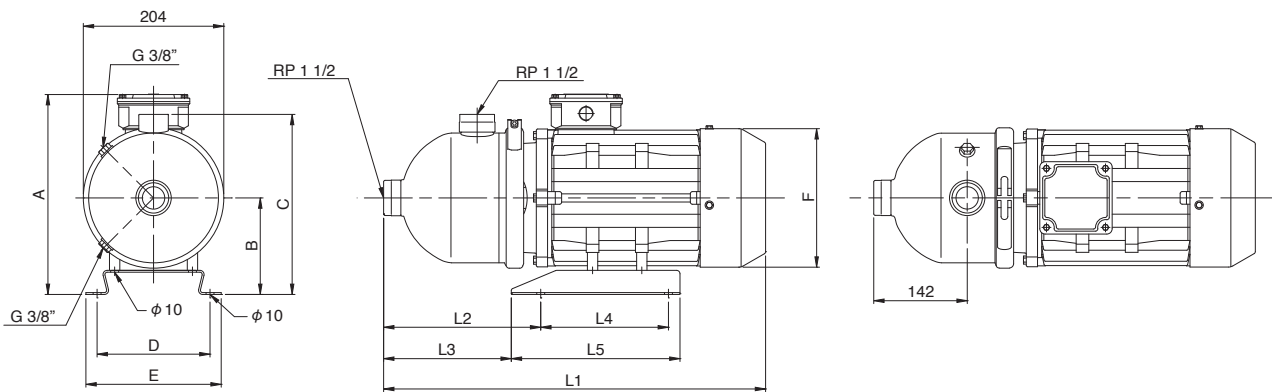
■ Dimensions and weights



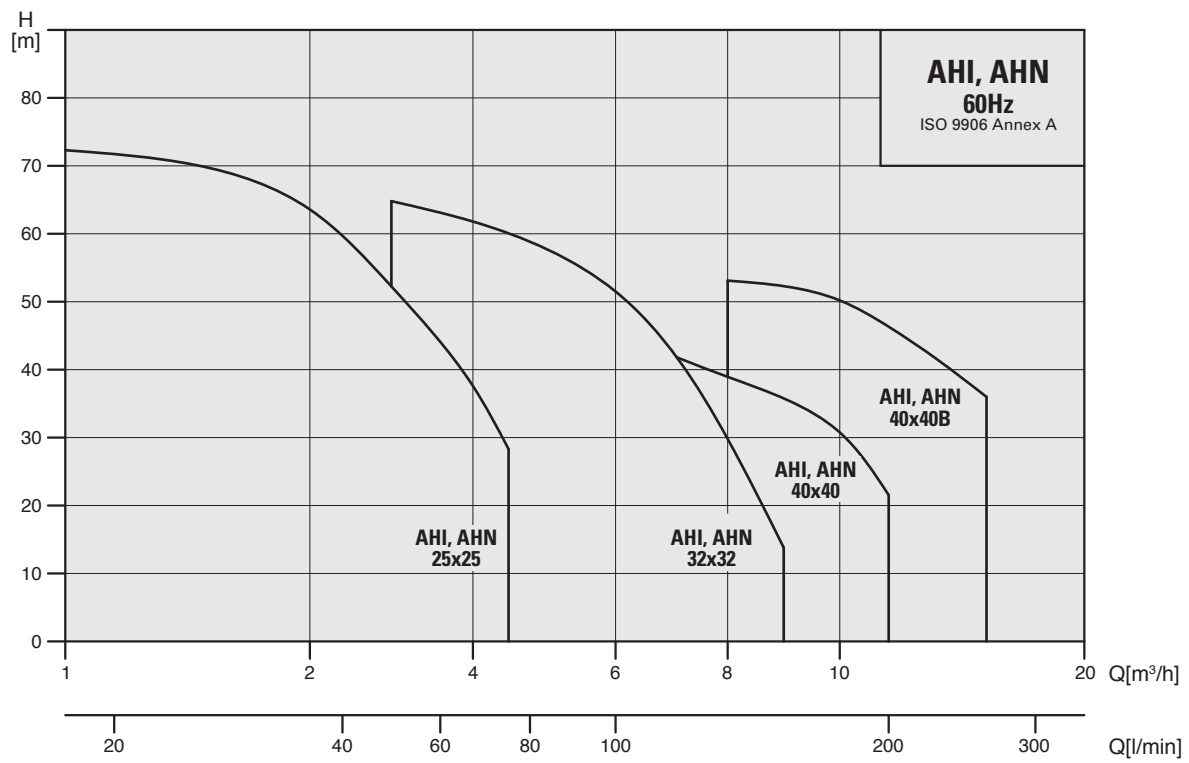
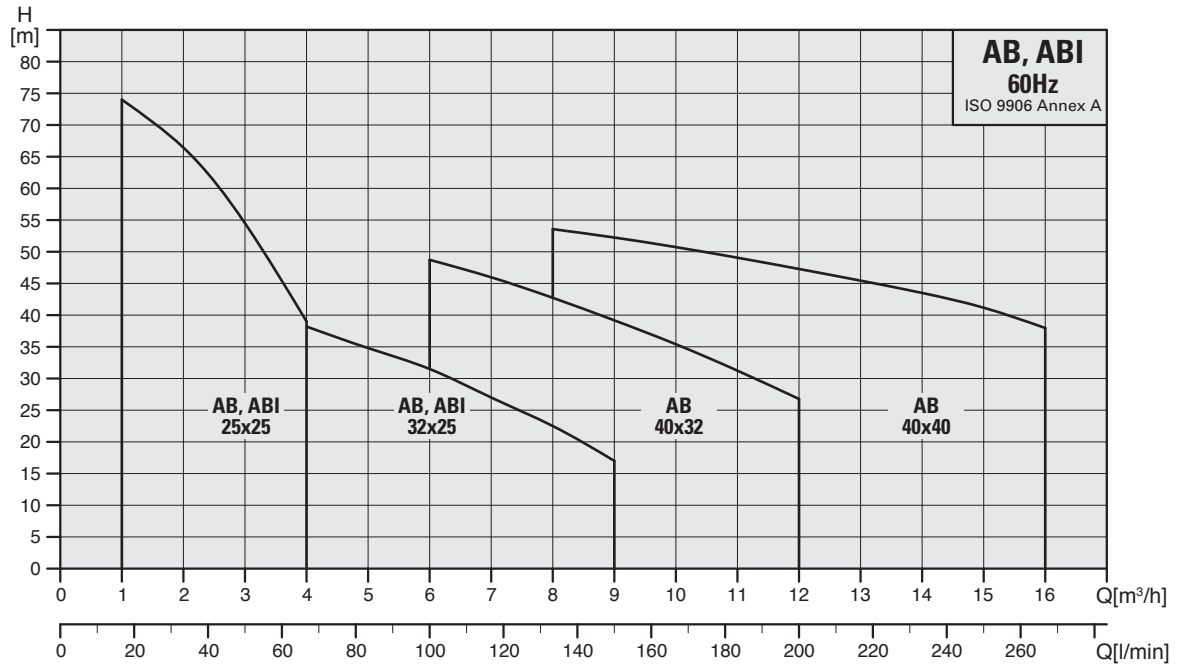
Model	Dimensions (mm)													Weight (kg)	
	L1		L2	L3	L4	L5	A		B	C	D	E	F	1φ	3φ
	1φ	3φ					1φ	3φ							
AHI, AHN 40x401-5.55(S)	403	403	181	171	138	162	255	233	118	243	108	132	141	10.2	10.0
AHI, AHN 40x402/1-51.1(S)	441	441	181	171	138	162	255	233	118	243	108	132	141	12.3	12.1
AHI, AHN 40x402/2-5.75	-	441	181	171	138	162	-	233	118	243	108	132	141	-	12.0
AHI, AHN 40x402-51.1(S)	441	441	181	171	138	162	255	233	118	243	108	132	141	13.5	13.3
AHI, AHN 40x403/1-51.5S(1φ)	514	-	200	180	195	235	267	-	121	245	158	178	177	23.1	-
AHI, AHN 40x403/1-51.5(3φ)	-	441	181	171	138	162	-	233	118	243	108	132	141	-	13.9
AHI, AHN 40x403-51.5(S)	514	493	200	180	195	235	267	261	121	245	158	178	177	23.1	22.2

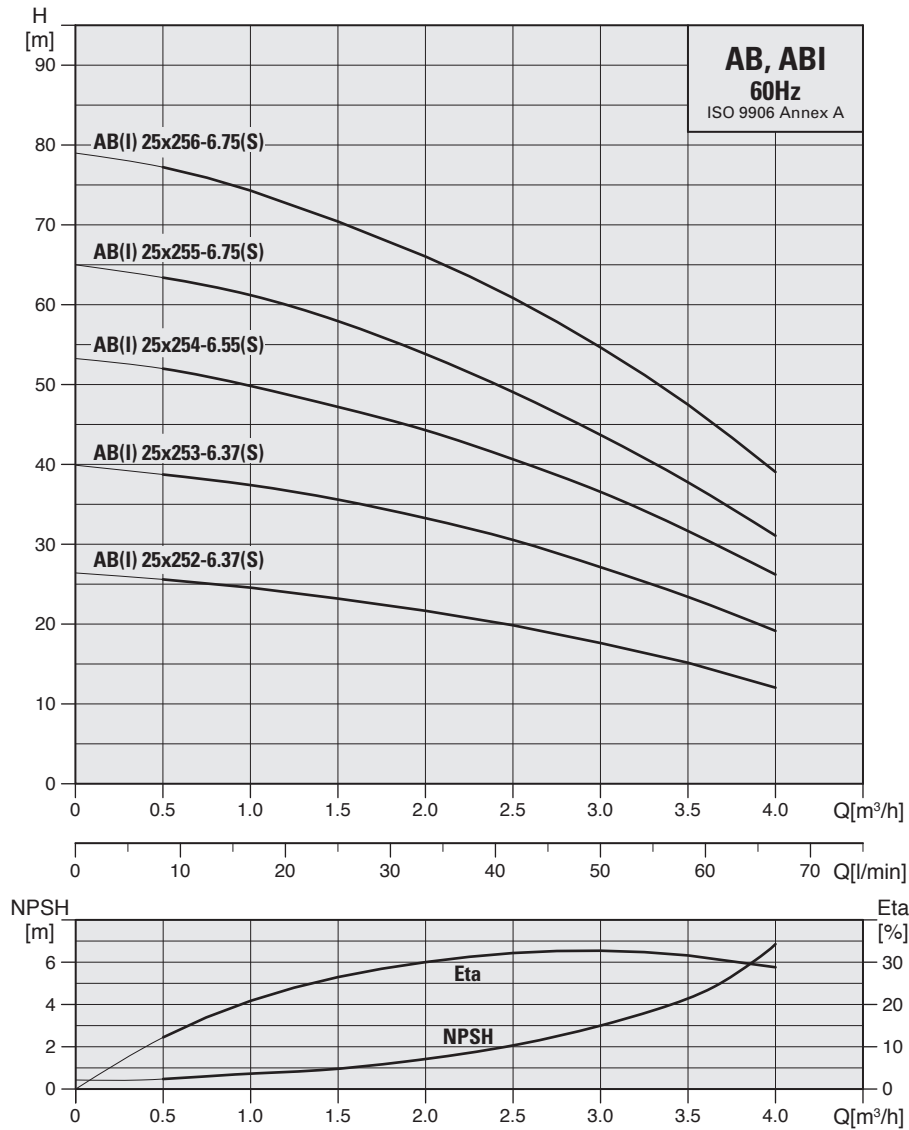


Dimensions and weights

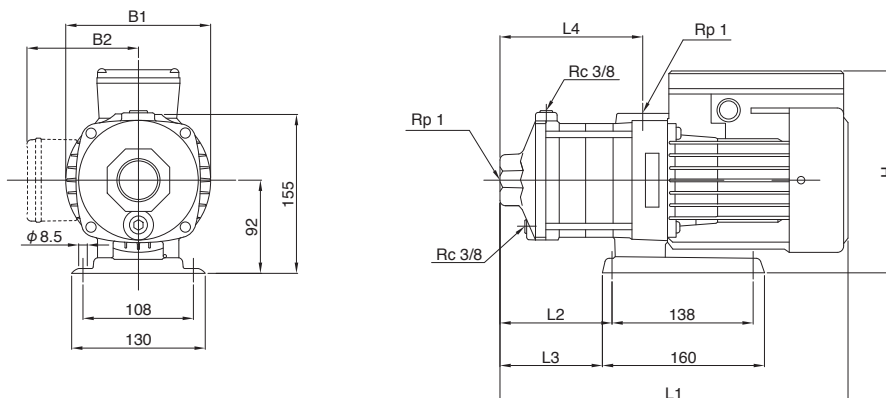


Model	Dimensions (mm)													Weight (kg)	
	L1		L2	L3	L4	L5	A		B	C	D	E	F	1φ	3φ
	1φ	3φ					1φ	3φ							
AHI, AHN 40x40B1/1-5.37	-	403	181	171	138	162	-	233	118	243	108	132	141	-	9.4
AHI, AHN 40x40B1-51.1(S)	441	441	181	171	138	162	255	233	118	243	108	132	141	11.7	11.5
AHI, AHN 40x40B2/1-51.1(S)	441	441	181	171	138	162	255	233	118	243	108	132	141	13.4	13.1
AHI, AHN 40x40B2-52.2(S)	514	493	200	180	195	235	267	261	121	245	158	178	177	22.5	21.5
AHI, AHN 40x40B3/1-52.2(S)	514	493	200	180	195	235	267	261	121	245	158	178	177	25.7	24.4
AHI, AHN 40x40B3-53.0	-	539	230	198	195	245	-	583	133	259	174	198	197	-	30.2

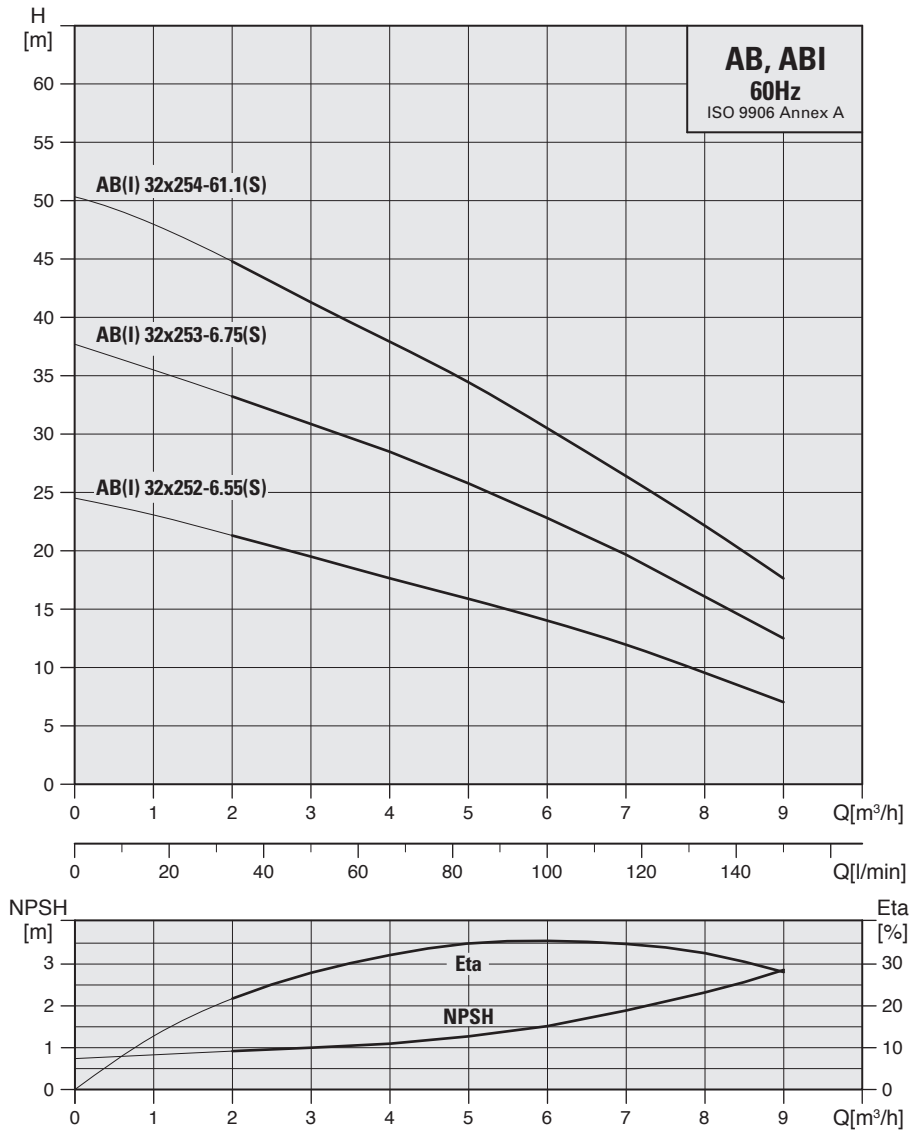




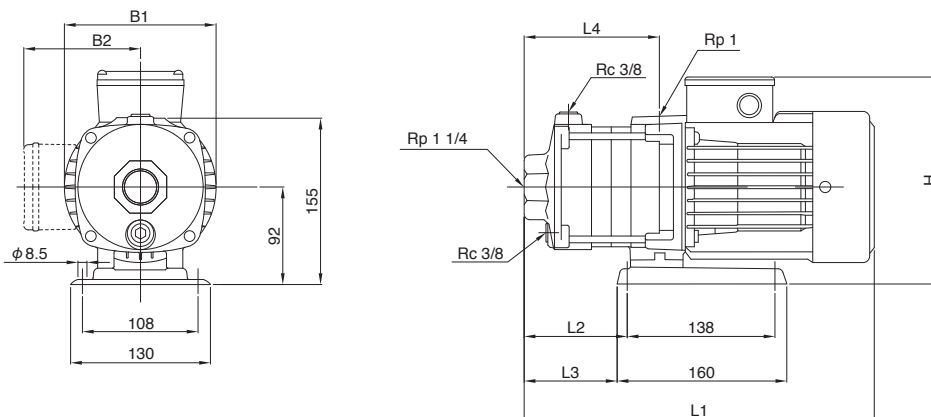
■ Dimensions and weights



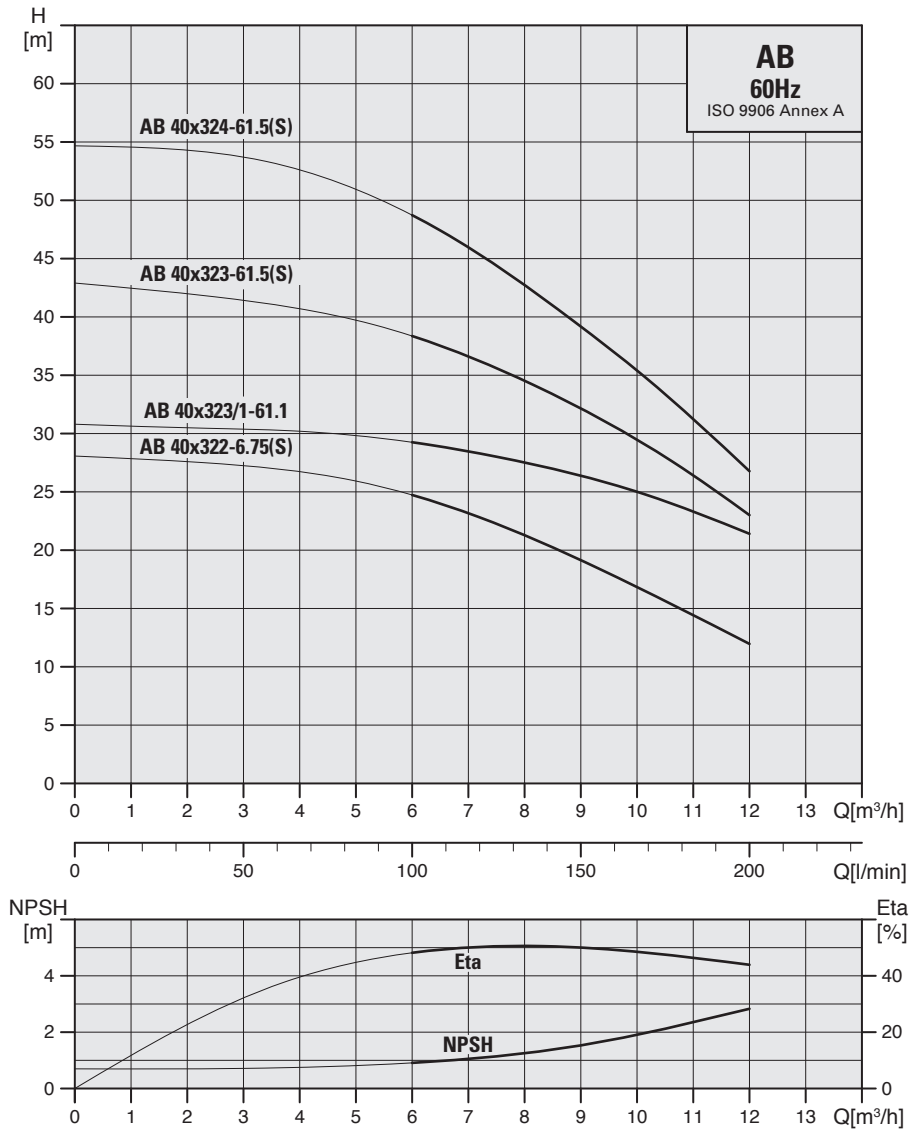
Model	Dimensions (mm)								Weight (kg)				
	L1	L2	L3	L4	B1	B2		H		AB		ABI	
						1φ	3φ	1φ	3φ	1φ	3φ	1φ	3φ
AB, ABI 25x252-6.37(S)	309	75	63	101	141	127	112	228	206	10.3	10.0	9.1	8.8
AB, ABI 25x253-6.37(S)	327	93	81	119	141	127	112	228	206	11.1	10.8	10.0	9.6
AB, ABI 25x254-6.55(S)	345	111	99	137	141	127	112	228	206	11.3	11.1	10.2	10.0
AB, ABI 25x255-6.75(S)	403	129	117	155	141	127	112	228	206	13	12.4	11.8	11.5
AB, ABI 25x256-6.75(S)	421	147	135	173	141	127	112	228	206	13.2	12.7	12.1	11.7



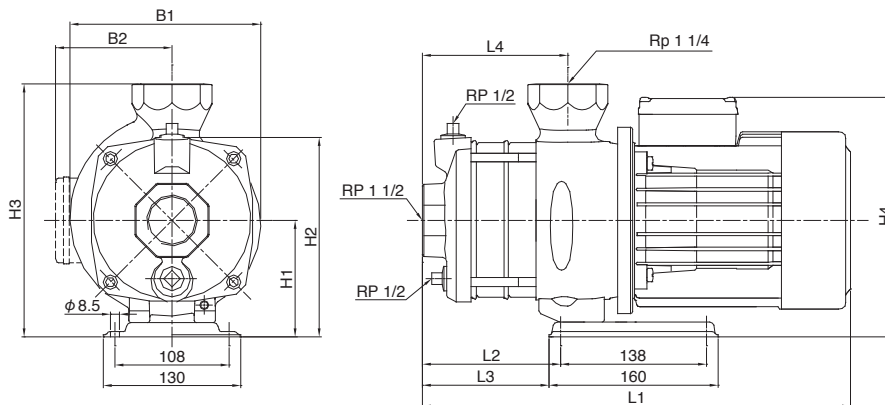
■ Dimensions and weights



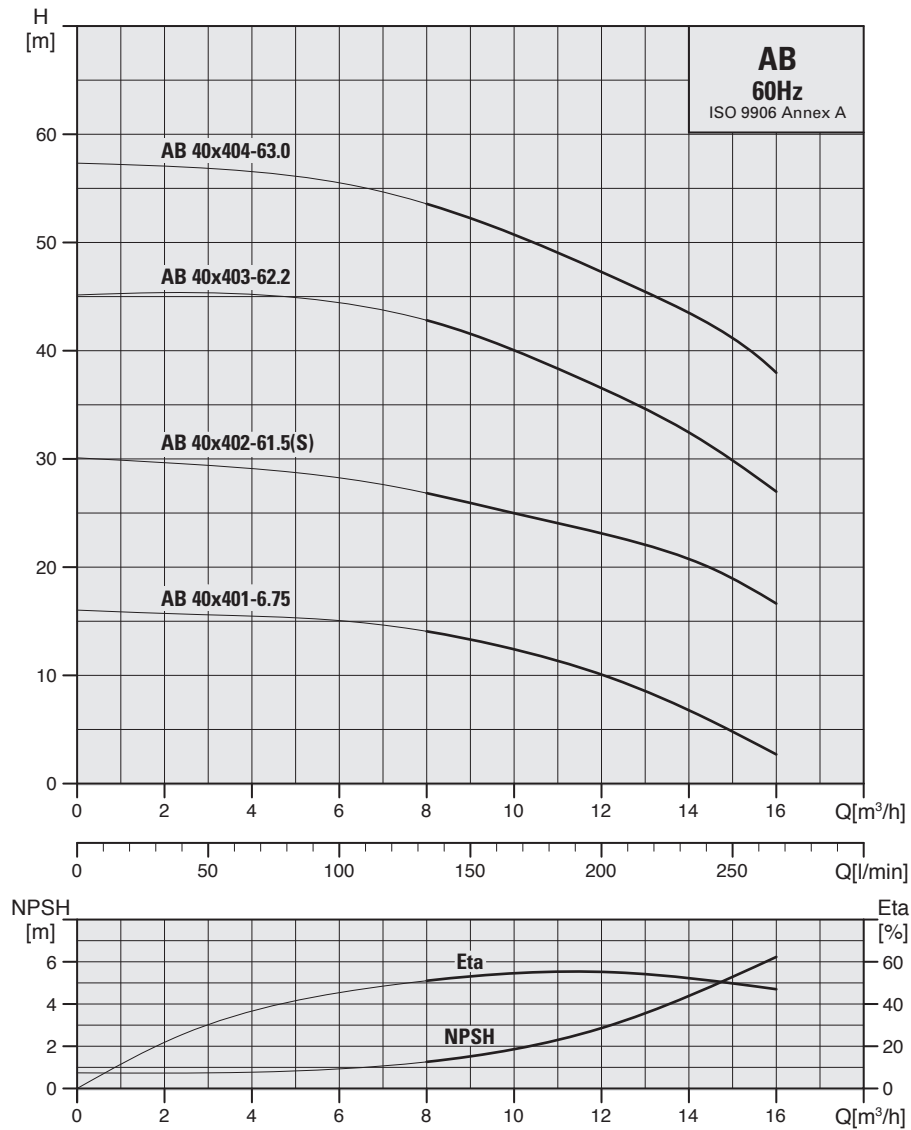
Model	Dimensions (mm)								Weight (kg)				
	L1	L2	L3	L4	B1	B2		H		AB		ABI	
						1φ	3φ	1φ	3φ	1φ	3φ	1φ	3φ
AB, ABI 32x252-6.55(S)	318	84	72	110	141	127	112	228	206	12.2	10.7	9.8	9.5
AB, ABI 32x253-6.75(S)	384	111	99	137	141	127	112	228	206	12.7	12.3	11.5	11.1
AB, ABI 32x254-61.1(S)	412	138	126	164	141	127	112	228	206	14	13.7	12.8	12.6



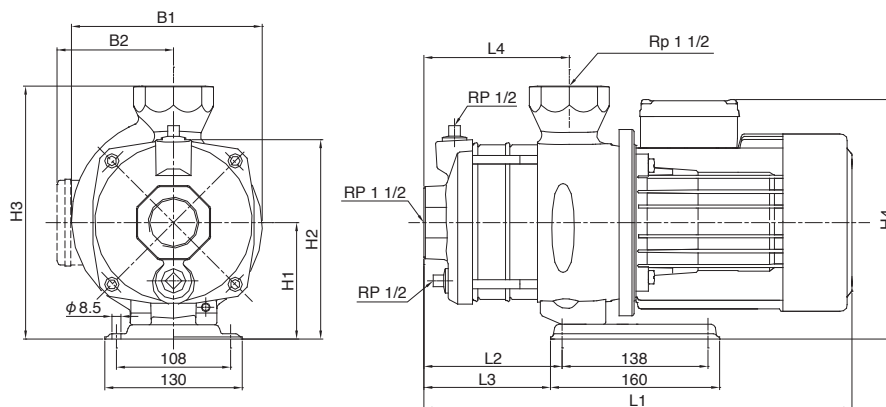
■ Dimensions and weights



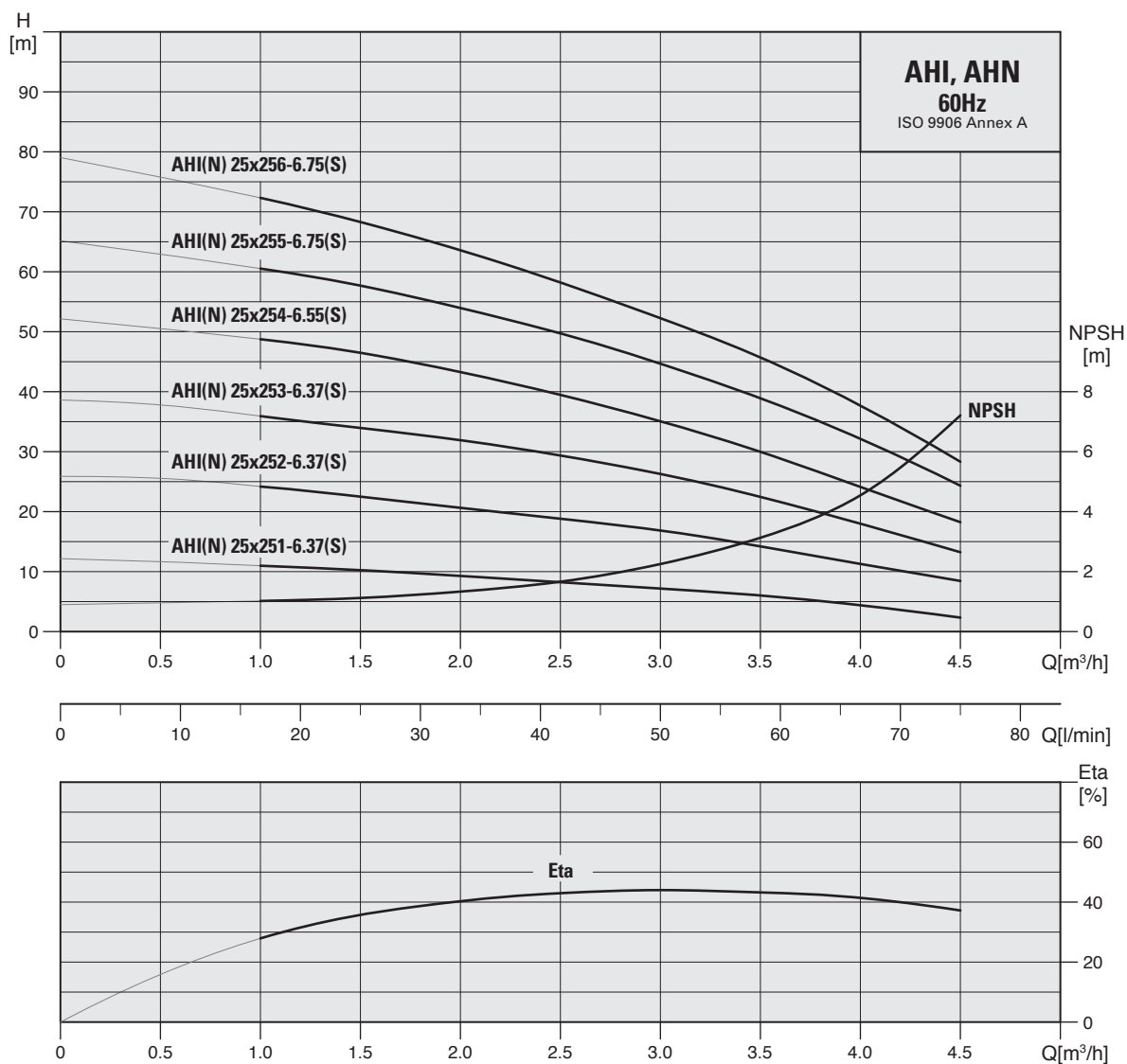
Model	Dimensions (mm)													Weight (kg)		
	L1		L2	L3	L4	B1		B2		H1	H2	H3	H4		1φ	3φ
	1φ	3φ				1φ	3φ	1φ	3φ				1φ	3φ		
AB 40x322-6.75(S)	360	360	54	42	78	181	181	136	116	112	190	240	248	228	18.6	18.4
AB 40x323/1-61.1	-	390	84	72	108	-	181	-	116	112	190	240	-	228	-	20.3
AB 40x323-61.5(S)	448	390	102	90	108	185	181	156	116	112	190	240	268	228	26	20.4
AB 40x324-61.5(S)	448	448	102	90	108	185	185	156	141	112	190	240	268	253	26.2	26.2



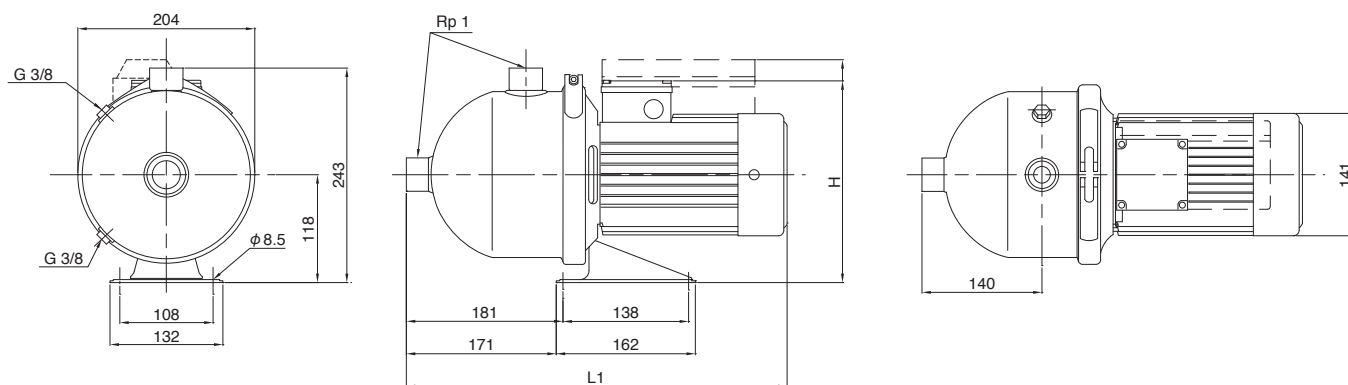
■ Dimensions and weights



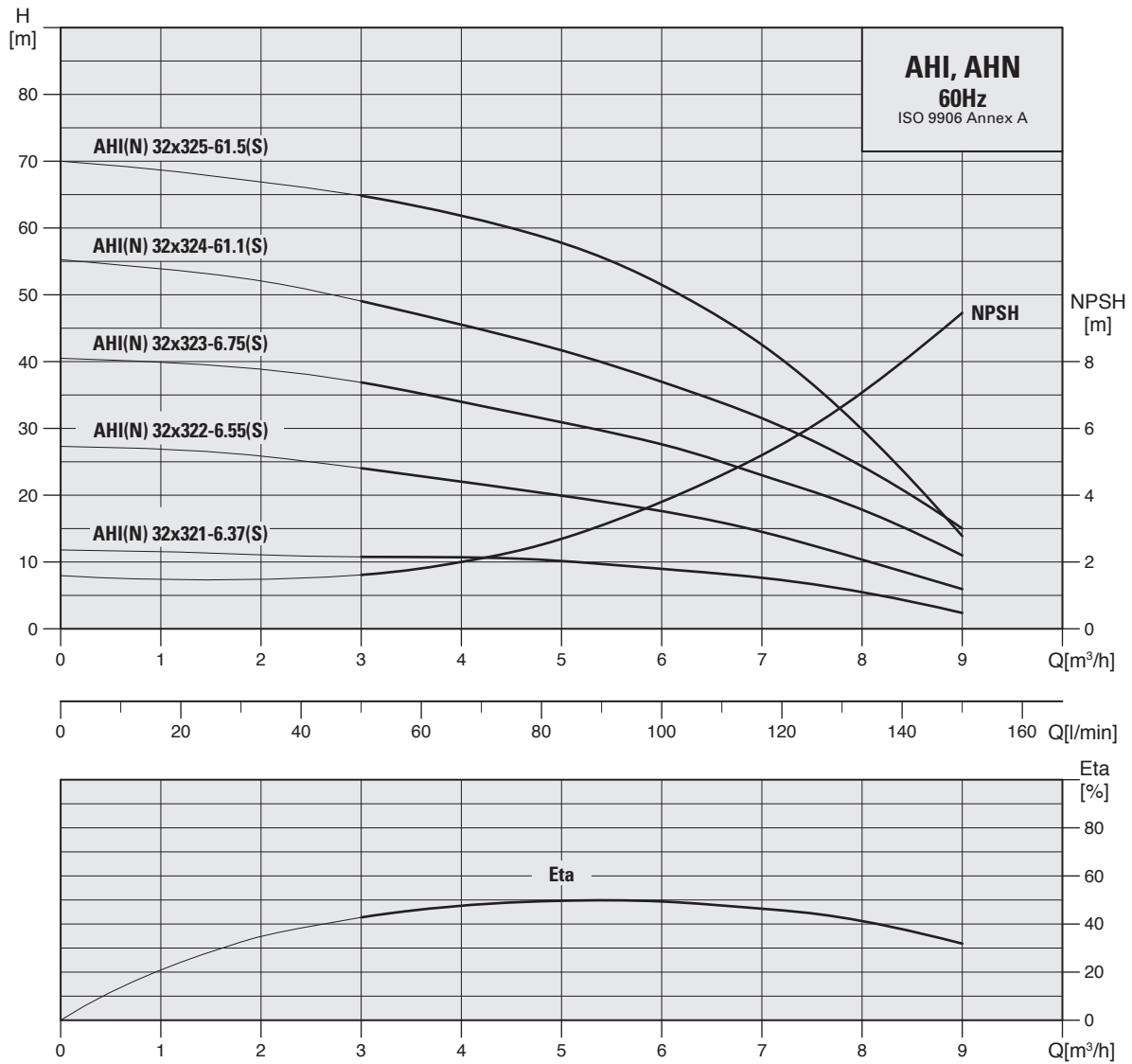
Model	Dimensions (mm)														Weight (kg)	
	L1		L2	L3	L4	B1		B2		H1	H2	H3	H4		1φ	3φ
	1φ	3φ				1φ	3φ	1φ	3φ				1φ	3φ		
AB 40x401-6.75	-	360	54	42	78	-	181	-	116	112	190	240	-	228	-	16.2
AB 40x402-61.5(S)	419	390	54	42	78	185	181	156	116	112	190	240	268	228	25.2	19.1
AB 40x403-62.2	-	425	102	90	108	-	185	-	141	112	190	240	-	253	-	28.3
AB 40x404-63.0	-	471	102	90	108	-	196	-	147	125	203	253	-	272	-	33.6



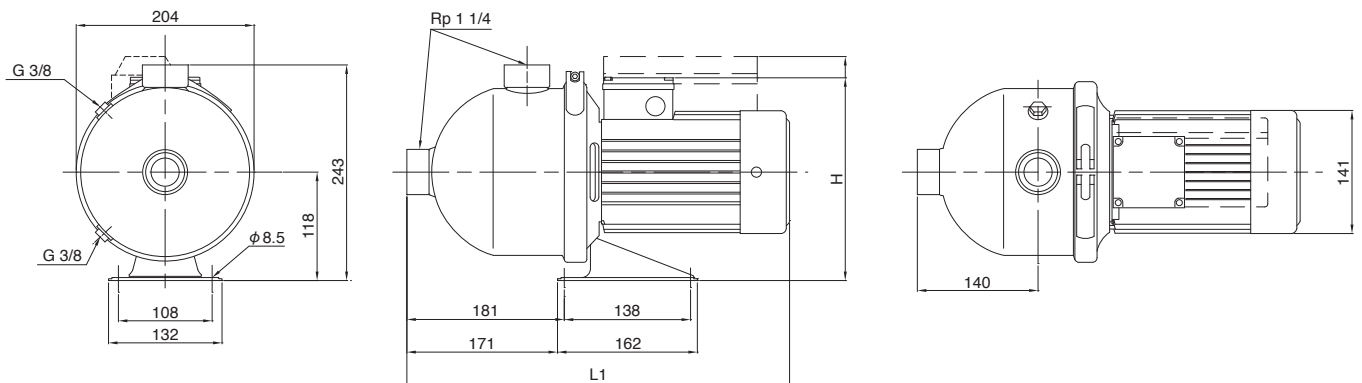
■ Dimensions and weights



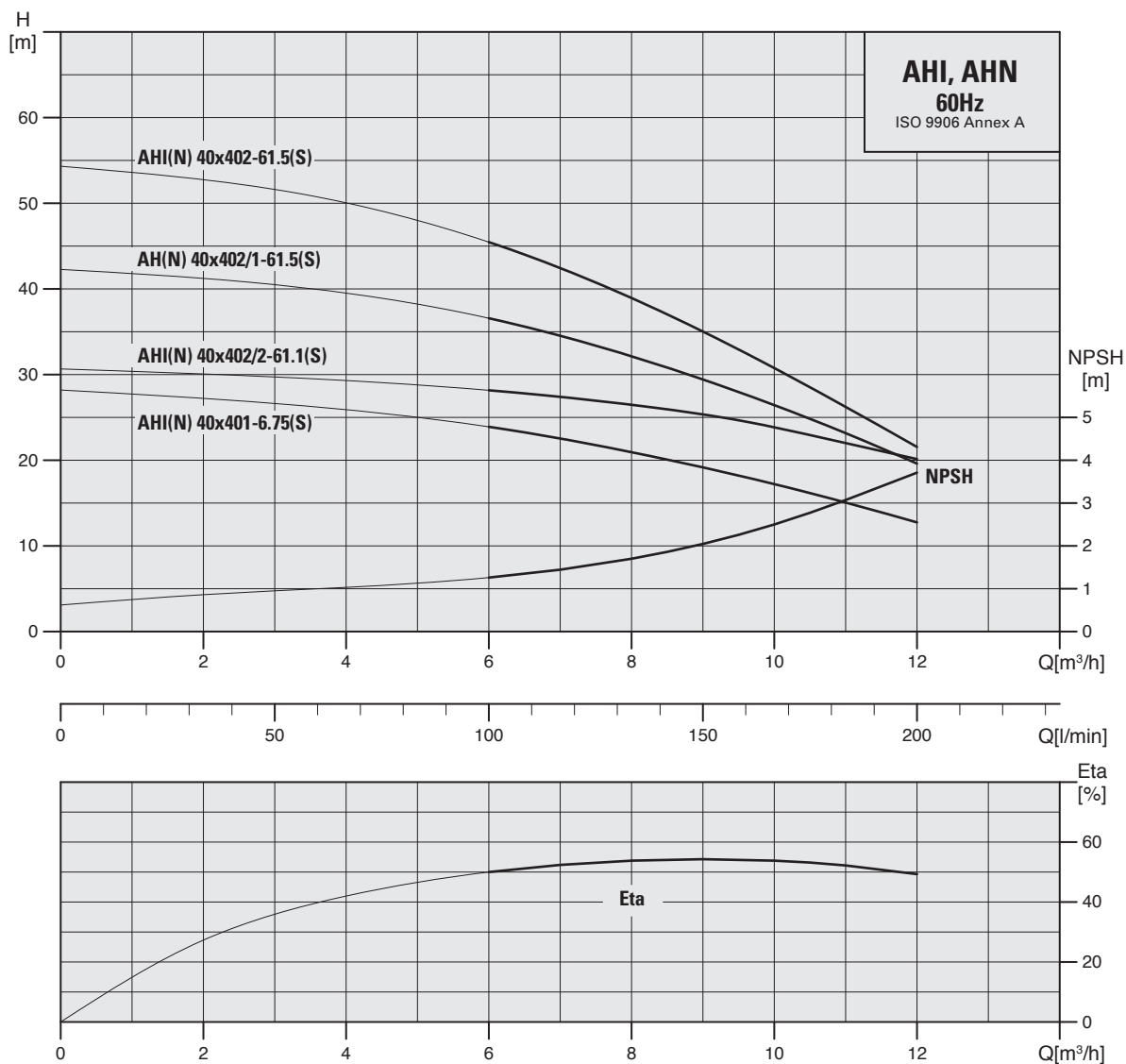
Model	Dimensions (mm)				Weight (kg)
	1-Phase		3-Phase		
	L1	H	L1	H	
AHI, AHN 25x251-6.37(S)	403	255	403	233	9.5
AHI, AHN 25x252-6.37(S)	403	255	403	233	9.5
AHI, AHN 25x253-6.37(S)	403	255	403	233	9.8
AHI, AHN 25x254-6.55(S)	403	255	403	233	10.3
AHI, AHN 25x255-6.75(S)	441	255	441	233	11.7
AHI, AHN 25x256-6.75(S)	441	255	441	233	12.0



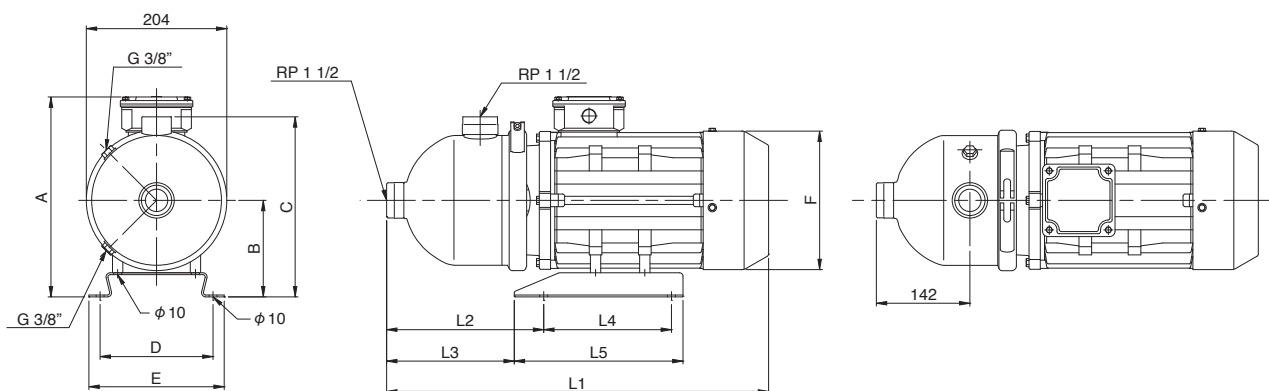
■ Dimensions and weights



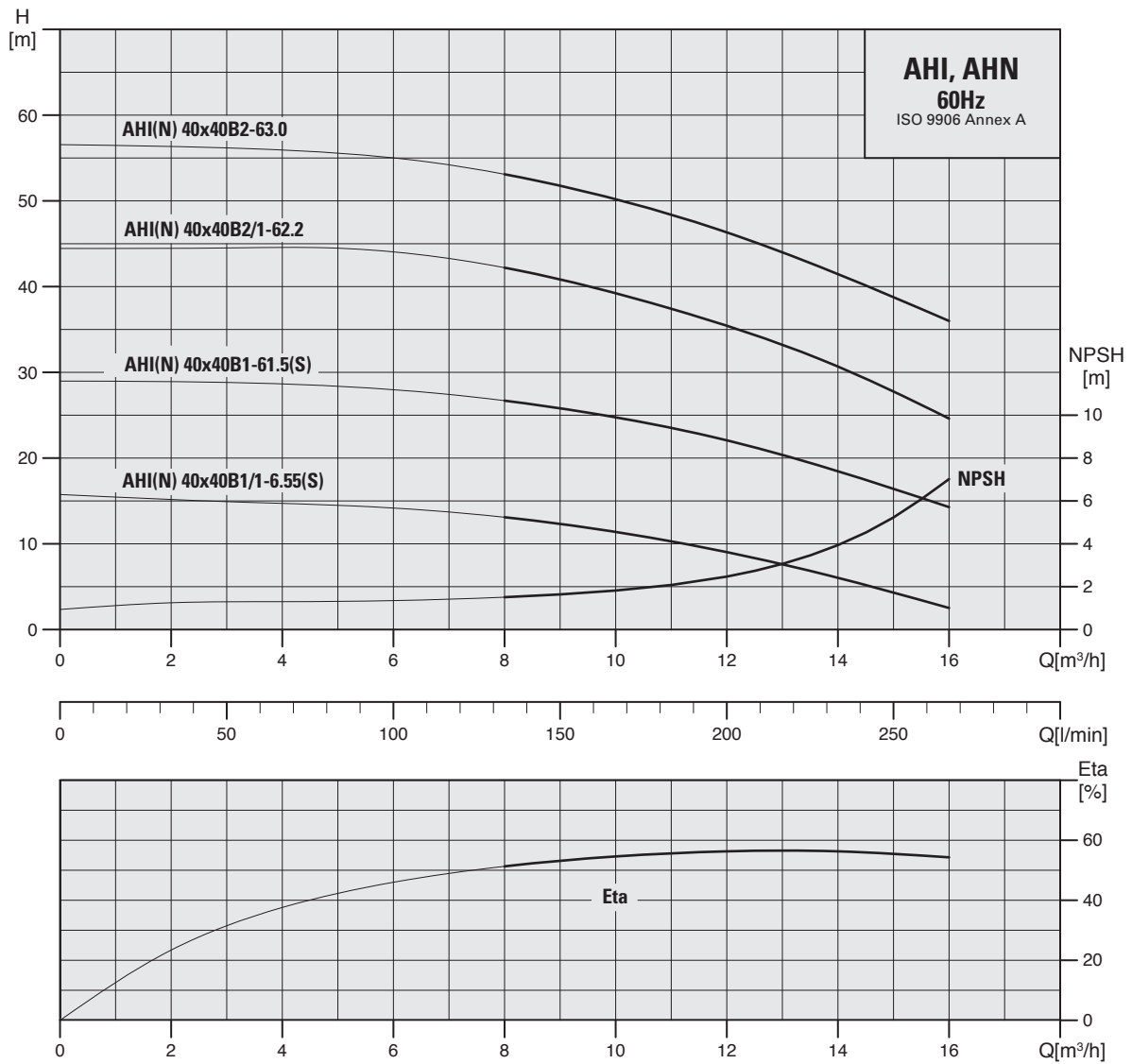
Model	Dimensions (mm)				Weight (kg)
	1-Phase		3-Phase		
	L1	H	L1	H	
AHI, AHN 32x321-6.37(S)	403	255	403	233	9.5
AHI, AHN 32x322-6.55(S)	403	255	403	233	9.5
AHI, AHN 32x323-6.75(S)	403	255	403	233	10.1
AHI, AHN 32x324-61.1(S)	441	255	441	233	11.5
AHI, AHN 32x325-61.5(S)	441	255	441	233	12.8



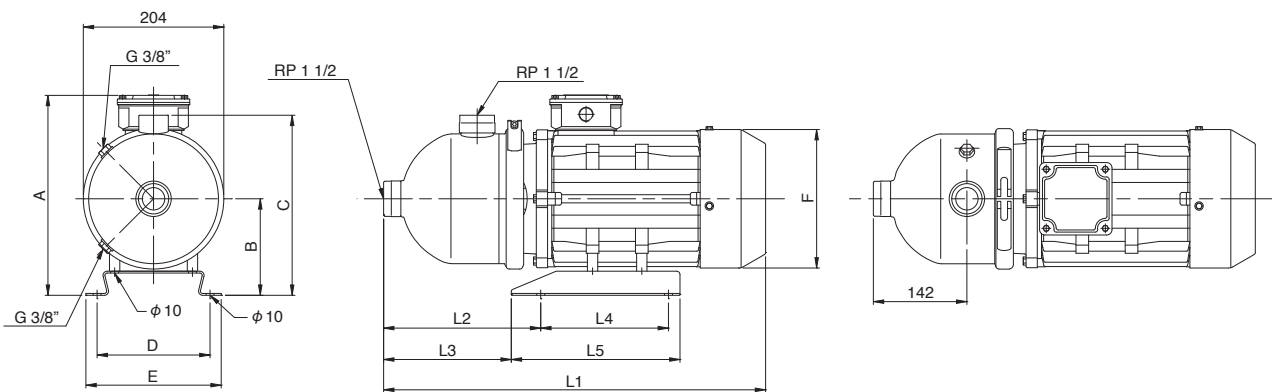
■ Dimensions and weights



Model	Dimensions (mm)											Weight (kg)			
	L1		L2	L3	L4	L5	A		B	C	D	E	F	1φ	3φ
	1φ	3φ					1φ	3φ							
AHI, AHN 40x401-6.75(S)	441	441	181	171	138	162	255	233	118	243	108	132	141	11.7	11.5
AHI, AHN 40x402/2-61.1(S)	441	441	181	171	138	162	255	233	118	243	108	132	141	13.2	13.1
AHI, AHN 40x402/1-61.5S	514	-	200	180	195	235	267	-	121	245	158	178	177	21.4	-
AHI, AHN 40x402-61.5(S)	-	441	181	171	138	162	-	233	118	243	108	132	141	-	13.2
AHI, AHN 40x402-61.5(S)	514	493	200	180	195	235	267	261	121	245	158	178	177	21.5	21.6



■ Dimensions and weights



Model	Dimensions (mm)													Weight (kg)	
	L1		L2	L3	L4	L5	A		B	C	D	E	F	1φ	3φ
	1φ	3φ					1φ	3φ							
AHI, AHN 40x40B1/1-6.55(S)	403	403	181	171	138	162	255	233	118	243	108	132	141	10.3	10.1
AHI, AHN 40x40B1-61.5S	514	-	200	180	195	235	267	-	121	245	158	178	177	20.6	-
AHI, AHN 40x40B1-61.5	-	441	181	171	138	162	-	233	118	243	108	132	141	-	12.6
AHI, AHN 40x40B2/1-62.2	-	493	200	180	195	235	-	261	121	245	158	178	177	-	23.7
AHI, AHN 40x40B2-63.0	-	539	230	198	195	245	-	284	133	259	174	198	197	-	29.4

Electrical data

Horizontal Multistage Centrifugal Pumps

50Hz

		1X220-240V		3X220-240VΔ/380-415VY	
		P ₁ [W]	I ₁ /I ₁ (A)	P ₁ (W)	I ₁ /I ₁ (A)
AB/ABI25X25	2-5.37(S)	380	1.7 - 2.0	430	2.2-2.6 / 1.3-1.5
	3-5.37(S)	470	2.1 - 2.2	530	2.2-2.5 / 1.3-1.45
	4-5.37(S)	620	2.7 - 2.8	660	2.4-2.8 / 1.4-1.6
	5-5.55(S)	720	3.2 - 3.1	770	2.5-2.9 / 1.45-1.7
	6-5.55(S)	830	3.7 - 3.6	860	2.9-3.3 / 1.7-1.9
AB/ABI32X25	2-5.37(S)	560	2.6 - 2.5	610	2.4-2.9 / 1.4-1.7
	3-5.55(S)	770	3.6 - 3.5	790	2.5-2.9 / 1.5-1.7
	4-5.75(S)	960	4.4 - 4.1	1010	3.1-3.3 / 1.8-1.9
	5-5.75(S)	1160	5.3 - 5.0	1240	4.2-4.5 / 2.4-2.6
	6-5.1(S)	1430	6.7 - 6.4	1460	5.1-5.5 / 2.9-3.2
AB40X32	2-5.55(S)	760	3.3 - 3.2	810	2.9-3.3 / 1.7-1.9
	3/1-5.75			1060	3.5-3.8 / 2.0-2.2
	3-5.75(S)	1130	5.2 - 5.0	1260	4.3-4.8 / 2.5-2.8
	4-5.1(S)	1390	6.3 - 6.1	1520	5.7-6.3 / 3.3-3.7
	5-5.1(S)	1940	8.2 - 8.1	1860	5.7-6.3 / 3.4-3.7
AB40X40	1-5.37			590	2.8-3.1 / 1.6-1.8
	2-5.75(S)	1160	5.3 - 5.1	1170	3.8-4.0 / 2.2-2.3
	3-5.1(S)	1680	7.8 - 7.4	1690	5.7-6.5 / 3.3-3.8
	4-5.1(S)	2400	11.0-10.6	2350	7.3-7.6 / 4.2-4.4
	5-5.2(S)	2910	12.7-12.2	2820	8.8-9.0 / 5.1-5.2
	6-53.0			3320	10.6-11.4 / 6.1-6.6

60Hz

		1X110 /220V		3X220-255VΔ/380-440VY	
		P ₁ [W]	I ₁ /I ₁ (A)	P ₁ (W)	I ₁ /I ₁ (A)
AB/ABI25X25	2-6.37(S)	570	6.3/3.2	550	1.8-1.9 / 1.0-1.1
	3-6.37(S)	780	7.9 / 4.1	680	3.5-3.3 / 2.0-1.9
	4-6.55(S)	870	8.8 / 4.4	950	3.1-3.2 / 1.8-1.9
	5-6.75(S)	1190	11.7 / 5.9	1160	3.7-3.8 / 2.1-2.2
	6-6.75(S)	1410	13.7 / 6.9	1280	3.7-3.8 / 6.4-6.6
AB/ABI32X25	2-6.55(S)	950	9.5 / 4.7	890	2.85-3.0 / 1.65-1.8
	3-6.75(S)	1310	12.5 / 6.2	1250	3.9-4.0 / 2.3-2.4
	4-6.1(S)	1700	/ 8.3	1630	5.1-5.3 / 2.9-3.1
AB40X32	2-6.75(S)	1250	11.7 / 5.9	1220	3.7-3.8 / 2.2-2.3
	3/1-6.1			1620	4.8-5.0 / 2.8-2.9
	3-6.1(S)	1830	/ 8.9	1860	5.7-5.5 / 3.3-3.2
	4-6.1(S)	2080	/ 10.4	2340	6.4-5.9 / 3.7-3.4
				3X220-255V / 380-480V	
AB40X40	1-6.75			910	3.5-3.7 / 2.0-2.1
	2-6.1(S)	2120	/ 9.4	1960	6.0-5.9 / 3.5-3.4
	3-6.2.2			2940	8.8-10.2 / 5.1-5.9
	4-63.0			3810	11.2-11.3 / 6.5-6.6
				3X220-255V / 380-480V	

50Hz

		1X220-240V		3X220-240VΔ/380-415VY	
		P ₁ [W]	I ₁ /I ₁ (A)	P ₁ (W)	I ₁ /I ₁ (A)
AHI/AHN25X25	2-5.37(S)	360	1.7-1.9	370	2.0-2.7 / 1.2-1.6
	3-5.37(S)	470	2.3-2.2	550	2.4-2.8 / 1.4-1.6
	4-5.37(S)	580	2.7-2.6	650	2.4-2.7 / 1.4-1.6
	5-5.55(S)	720	3.2-3.3	810	2.7-3.0 / 1.6-1.8
	6-5.55(S)	830	3.8-3.6	910	2.9-3.3 / 1.7-1.9
AHI/AHN32X32	2-5.37(S)	580	2.7-2.6	660	2.5-2.9 / 1.5-1.7
	3-5.55(S)	820	3.9-3.7	850	2.8-3.0 / 1.6-1.7
	4-5.75(S)	1000	4.6-4.4	1060	3.3-3.5 / 1.9-2.0
	5-5.1(S)	1240	5.8-5.5	1310	4.2-4.5 / 2.4-2.6
AHI/AHN40X40	6-5.1(S)	1510	7.1-6.9	1550	5.2-5.6 / 3.0-3.3
	1-5.55(S)	760	3.3-3.1	810	2.7-3.1 / 1.6-1.8
	2/2-5.75			1120	4.2-4.5 / 2.4-2.6
	2/1-5.1(S)	1150	5.3-5.1	1190	3.9-4.4 / 2.3-2.6
	2-5.1(S)	1420	6.8-6.6	1450	5.0-5.5 / 2.9-3.2
AHI/AHN40X40B	3/1-5.1(S)	1880	8.1-7.9	1840	5.8-6.5 / 3.4-3.8
	3-5.1(S)	2100	9.1-9.0	2050	6.4-6.9 / 3.7-4.0
	1/1-5.37			550	2.4-2.8 / 1.4-1.6
	1-5.1(S)	1170	5.3-5.1	1190	3.6-3.8 / 2.1-2.2
	2/1-5.1(S)	1650	7.6-7.5	1690	5.5-6.0 / 3.2-3.5
	2-5.2(S)	2310	10.6-10.4	2350	7.0-7.4 / 4.0-4.3
	3/1-5.2(S)	2980	13.1-12.7	2880	9.0-9.3 / 5.2-5.4
	3-53.0			3610	11.7-12.1 / 6.8-7.0

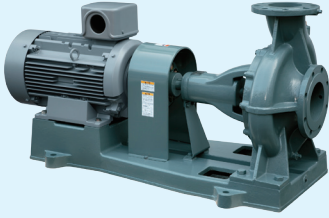
60Hz

		1X110 /220V		3X220-255VΔ/380-440VY	
		P ₁ [W]	I ₁ /I ₁ (A)	P ₁ (W)	I ₁ /I ₁ (A)
AHI/AHN25X25	1-6.37(S)	390	5.9 / 3.0	360	1.5-1.6 / 0.9-1.0
	2-6.37(S)	570	6.6 / 3.4	540	1.7-1.8 / 1.0-1.1
	3-6.37(S)	750	7.6 / 3.8	720	2.2-2.3 / 1.3-1.4
	4-6.55(S)	980	9.3 / 4.7	950	3.0-3.2 / 1.75-1.9
	5-6.75(S)	1160	10.7 / 5.4	1170	3.8-3.9 / 2.2-2.3
	6-6.75(S)	1375	12.4 / 6.3	1330	4.1-4.2 / 2.35-2.45
AHI/AHN32X32	1-6.37(S)	530	5.9 / 3.1	560	1.8-1.9 / 1.1-1.2
	2-6.55(S)	970	9.3 / 4.7	910	2.9-3.1 / 1.7-1.8
	3-6.75(S)	1360	12.5 / 6.5	1280	4.1-4.2 / 2.4-2.5
	4-6.1(S)	1730	/ 8.5	1675	4.7-4.8 / 2.7-2.8
	5-6.1(S)	2080	/ 9.9	1995	5.7-6.0 / 3.3-3.5
AHI/AHN40X40	1-6.75(S)	1280	11.4 / 6.0	1210	3.9-4.1 / 2.3-2.4
	2/2-6.1(S)	1730	/ 8.3	1670	5.2-5.3 / 3.0-3.1
	2/1-6.1(S)	2080	/ 9.3	1890	5.6-5.7 / 3.2-3.3
	2-6.1(S)	2460	/ 10.9	2360	7.1-6.9 / 4.1-4.0
				3X220-277V / 380-480V	
AHI/AHN40X40B	1/1-6.55(S)	940	8.5 / 4.5	850	2.8-3.0 / 1.6-1.75
	1-6.1(S)	2170	/ 9.7	1930	5.7-5.9 / 3.3-3.4
	2/1-6.2.2			2860	9.2-8.9 / 5.3-5.1
	2-63.0			3950	11.2-11.8 / 6.5-6.8
				3X220-277V / 380-480V	

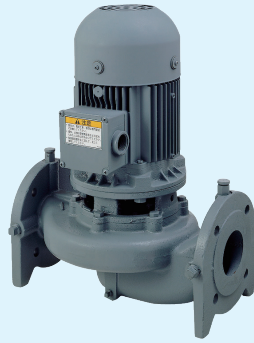
For reference only

TERAL

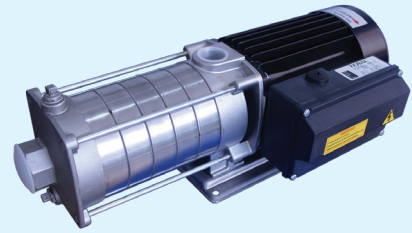
Pumps and Fans



End-suction Pumps



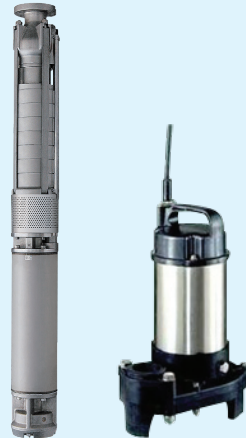
In-Line Pumps



Horizontal Multistage Pumps



Horizontal Split Case Pumps



Freshwater &
Sewage Submersible Pumps



Variable Speed Systems



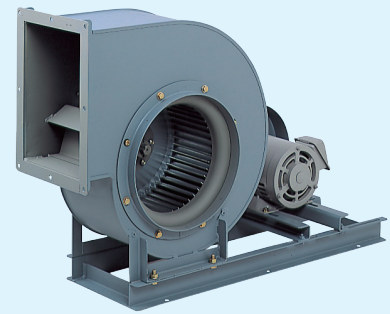
Vertical Multistage
Pumps



Coolant Pumps



Ring Blowers



Centrifugal Fans

TERAL ASIA LIMITED

Room 1001, 10/F., Olympia Plaza, 255 King's Road, North Point, Hong Kong Tel: +852-2571-0282 Fax: +852-2571-0619 E-mail: sales@teralasia.com

TERAL THAI CO.,LTD.

TERAL TRADING & SERVICE CO.,LTD.

150 Moo 16 Udomsornayuth Rd., T.Bangkrasan, A.Bangpa-In, Ayutthaya 13160 Thailand Tel: +66-3525-8543 Fax: +66-3525-849

TERAL GENERAL MACHINE (SHANGHAI) CO.,LTD.

No.285, Yuan Qu Road(N), Bei Qiao, Min Hang District, Shanghai 201109, China Tel: +86-21-6490-9128 Fax: +86-21-6490-9126

Affiliated Sister Company: Atai Fuji Motor Co., Ltd. (Ring Blowers & Coolant Pumps)

No.32, Sec2, Chang-Hsing Rd., Lu-Chu Hsiang, Taoyuan Hsien, Taiwan, R.O.C. Tel: +886-3-321-3030 Fax: +886-3-321-7890

TERAL MALAYSIA SDN BHD

L-1-1, Block L, No.2 Jalan PJU 1A/41B, Pusat Dagangan NZX, Ara Jaya, 47301 Petaling Jaya, Selangor D.E., Malaysia
Tel: +60-3-7885-8305 Fax: +60-3-7887-3305 E-mail: sales.my@teralasia.com

TERAL MIDDLE EAST F.Z.C.

E1-1921C, Ajman Free Zone, Ajman, UAE Tel: 00971 (0)551184953 Email: sales.me@teralasia.com

TERAL INC.

Head Office.230, Moriwake, Miyuki-cho, Fukuyama-city, Hiroshima, 720-0003, Japan Tel: +81-84-955-1111 Fax: +81-84-955-5777

www.teral.net