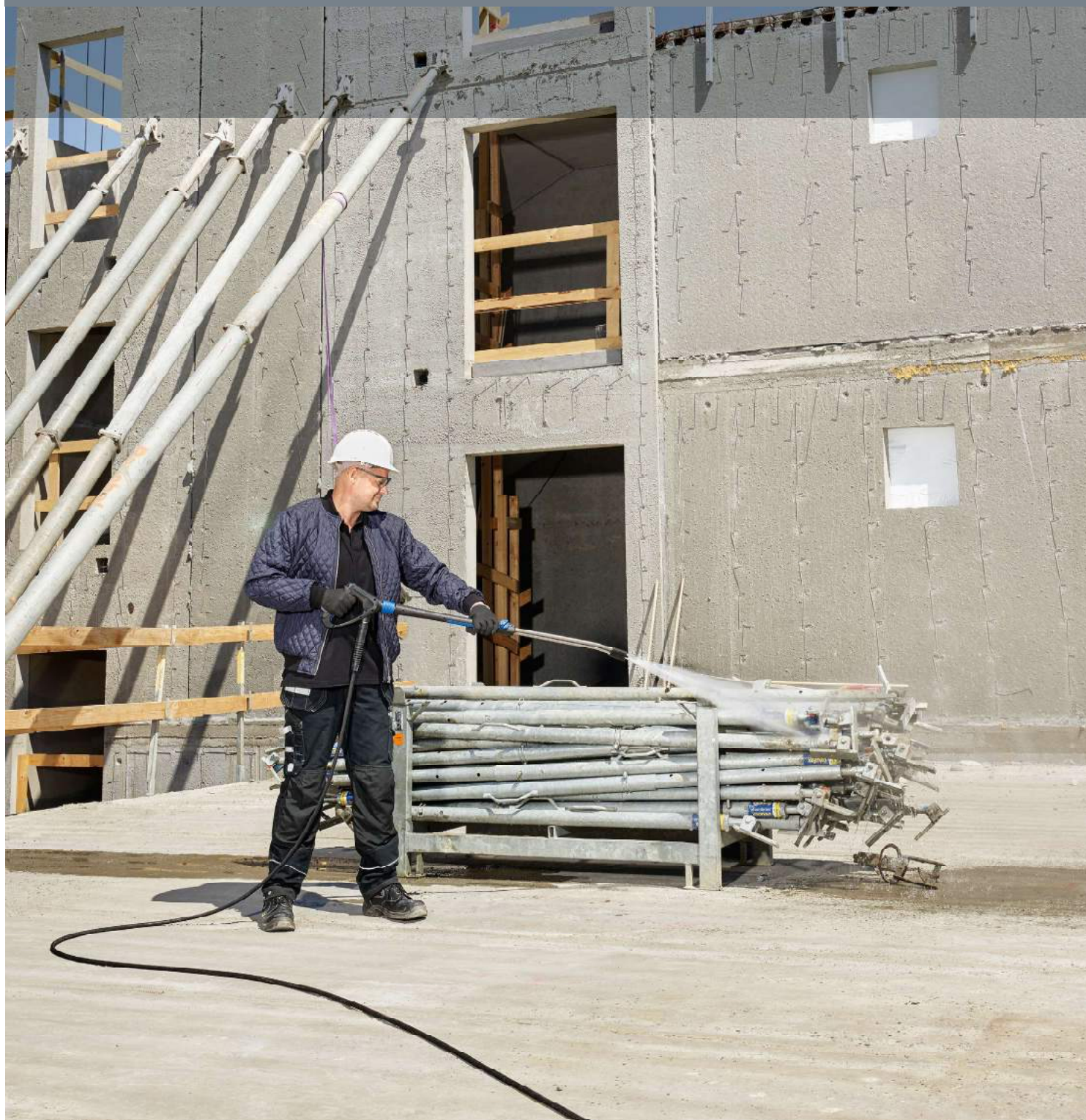


MC PE

Maximum mobility with zero compromise

Cold-water cleaning anywhere you need it



Off-the-grid
cleaning has never
been so effective



ACCESSORIES – Increase the productivity of your pressure washer



Hose Reel – MC PE
Easy pressure-hose storage and protection.
For 15 m DN8 hose or 20 m DN6 hose.
Includes 0.7m connection hose.



Sand filter (50µ), bracket-free
Protect your pump from damage
caused by sand wand dirt particles.
A critical asset in construction and
agriculture.



Suction-hose filter
Includes foot valve for
3/8" hose (not included).



Suction-dirt filter
Mesh size: 0.8 x 0.32mm.
Includes 3m hose with 3/4"
diameter.



Water-suction kit
Ideal for emptying flooded basements,
tanks, or pools at up to 300L/min. Can
extract up to 20mm of sludge, dirt,
sand, stones, algae, etc.



PowerSpeed Plus lance
Rotary jet nozzle increases
cleaning performance over larger
surfaces. Offers multiple effects
and benefits. Various nozzle sizes.



Sandblaster kit
Rubber nozzle. Ideal for quick
stripping of paint or rust.



Drain-cleaning kit
Hose length: 20m DN10.
Designed for unblocking
drains, toilets, and pipes.

Nilfisk has always strived to provide the most powerful, reliable, and convenient high-pressure washers on the market, and the new MC PE portfolio proves that our commitment remains strong. When it comes to mobile performance and independence, our fuel-driven solutions offer unparalleled freedom and flexibility of use, boosting productivity and solving a broad variety of cleaning challenges with ease.

New improvements and features include higher power for increased pressure; flat-proof tires for easy transport across even the roughest surfaces and terrain; vibration-isolating design to eliminate undesired machine movement and improve stability; and our Ergo quick-coupling system for easy setup and demounting. These additions to our already robust pressure-washer design help ensure that you can get the job done with minimal effort and optimal efficiency – absolutely anywhere.

FULLY INDEPENDENT

Ideal for cold-water applications in sites or environments where the electrical network is too weak – or unavailable – MC PE pressure washers enable high-impact cleaning without constraint. They can even operate without connection to a water network, since all machines in the portfolio are equipped with suction technology that can draw water from a river, well, or tank.

HIGH-PERFORMANCE CLEANING

With pressure ranging from 160-290bar, and Honda/Kohler engines from 5-13hp, the MC PE/DE portfolio helps you tackle the most demanding cleaning challenges with ease. Power, durability, and sustainability are all prioritized and achieved through smart design without compromise, whether you're cleaning tools or entire buildings.

BUILT FOR DURABILITY

All models are equipped with tough, robust pumps for sustained use in harsh environments. Each pump is equipped with a thermal dump valve, which protects against overheating and damage if the machine is left running during an operational pause. Some of the pumps are also fitted with ceramic pistons to ensure maximum lifetime, and the machine itself is equipped with a lightweight, shock-resistant frame.

ERGONOMIC AND CONVENIENT

Pressure-washing can be a major task, in terms of both time requirements and physical effort, so we have designed the MC PE range to enable comfortable, convenient operation over longer periods. Easy maneuverability, soft-grip handling, flat-proof tires, and compact design, all contribute to ease of use and reduced operator strain.

STABLE OPERATION

With the implementation of automotive vibration-isolation technology, MC PE pressure washers function without the risk of machine-walk or related accidents, and there is no need to continuously monitor the machine's placement during operation. In addition to on-site convenience, vibration-isolation also extends the machine's lifetime, and reduces the need for service or repairs – as well as associated costs.



Robust and powerful engine driven cold water high pressure washers



TECHNICAL SPECIFICATIONS

Description	MC 2C-160/740 PET	MC 3C-180/750 PET	MC 5M-280/1000 PE	MC 5M-195/1000 DE
Recommended avg. hours of use per day	2	3	5	5
Pump pressure (bar/MPa)	160/16	180/18	280/28	195/19.5
Cleaning impact (kg/force)	3.5	3.8	6.5	5.3
Water flow Qmax/Qieq (l/h)	740/670	750/690	1000/950	1000/950
Max. inlet temperature (°C)	60	60	60	60
Pump (RPM)	3400	3400	3400	1650
Power source petrol	Kohler SH265	Kohler CH270	Honda GX390	
Power source diesel				YANMAR L100 DE
Dimensions L x W x H (mm)	533 x 521 x 935	533 x 521 x 935	668 x 572 x 1021	750 x 680 x 850
Weight (kg)	30.2	32.2	52	110
Power consumption hp (kW)	6.5 (4.7)	7 (5.2)	13 (9.5)	10 (7.3)
Nozzle size	0370	.0400	.0370	.0530
Features:				
Stainless steel pistons	•			
Ceramic coated pistons		•		
Ceramic pistons			•	•
Direct drive	•	•	•	
Flat Free Wheels	•	•	•	
Standard equipment:				
ERGO COUPLING KIT	101119496	101119496	101119496	101119496
GARDENA COMPATIBLE MALE 3/4" ACCESSORY	106404529	106404529	106404529	
HOSE NOZZLE 20R3/4				61369
10 M WIRE HOSE DN6	301002275	301002275		
HOSE DN8 1 WIRE 10M W.ERGO FEMALE COUPL.			101405770	101405770
ERGO 2000 STANDARD W. HOSE SWIVEL	106403122	106403122	106403122	106403122
4-IN-1 LANCE INCL 0370 ALUMINUM HEAD	106408252			
4-IN-1 LANCE INCL 0400 ALUMINUM HEAD		106408253		
TORNADO PLUS 1000 BEND W/O NOZZLE			106403011	106403011
NOZZLE 0370 INDICATION RING BRONZE	101119737		101119737	
NOZZLE 0400 INDICATION RING METAL GREY		101119738		
NOZZLE 0530 INDICATION RING RED				101119742
ITEM NO	106404532	106404533	106404538	106174740